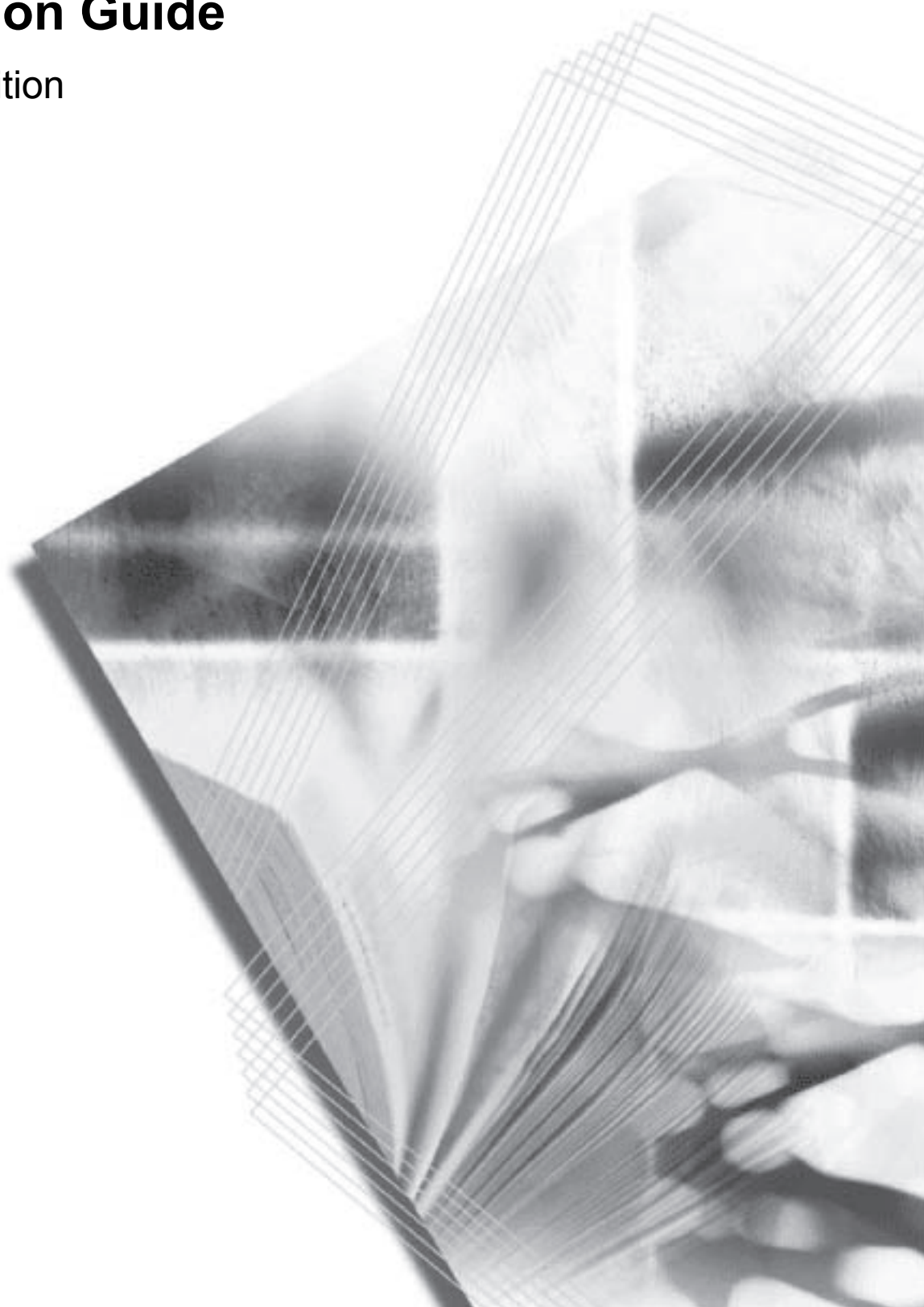


# **Printing System (Y)**

## **Operation Guide**

Set-up Edition



## About this Operation Guide

The Setup Edition of this Operation Guide is meant to be read when using this machine as a local printer or a network printer by installing a printer board. This Operation Guide explains how to set up this machine.

As the required set-up in order to use the printer as a scanner may differ depending upon the environment in use in the connected computer, please read those sections related to your specific computer environment and perform the appropriate set-up procedures explained there.

The Functions Edition of the Operation Guide explains how to perform printing, method of various settings, and method of operating from a computer.

## Using the Operation Guide (On-Line Manual)

The Operation Guide (On-Line Manual) is included in the supplied CD-ROM as a PDF (Portable Document Format) file. To read the On-Line Manual, Adobe Reader is needed.

All rights reserved. No part of this material may be reproduced or transmitted in any form or by any means, electronic or mechanical, including photocopying, recording or by any information storage and retrieval system, without permission in writing from the Publisher.

### Legal Restriction On Copying

- It may be prohibited to copy copyrighted material without permission of the copyright owner.
- It is prohibited under any circumstances to copy domestic or foreign currencies.
- Copying other items may be prohibited.

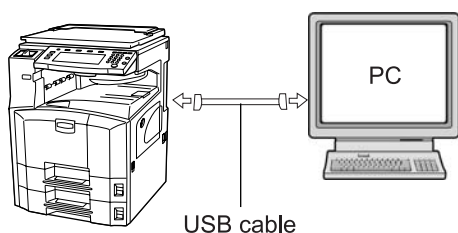
---

## Contents

<b>1</b>	<b>Preparations .....</b>	<b>1</b>
	Names of parts .....	1
	Main body .....	1
	Operation panel .....	2
<b>2</b>	<b>Set-up .....</b>	<b>3</b>
	Accessories .....	3
	Items to be prepared by user .....	3
	Connecting the printer cable .....	3
	Connecting the network cable .....	3
	Setting the network (TCP/IP) .....	5
	Installing the Printer Driver .....	9
	Installing the Software in Windows XP .....	9
	Installing the Software in Windows Vista .....	13
	Installing the Optional Printer Driver Components .....	15
	Uninstalling the Printer Driver .....	16
<b>3</b>	<b>Canceling printing .....</b>	<b>17</b>

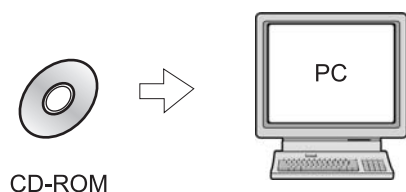
## Getting connected

For local connection of this machine (direct connection between a computer and the printer through a USB cable)



- 1 Connect the computer and the printer through a USB cable.

**Page 3**

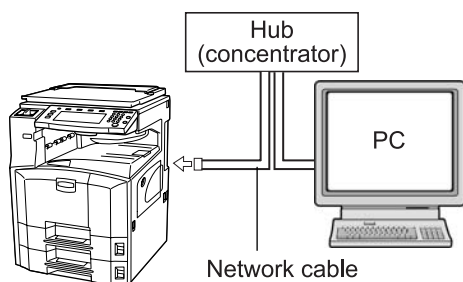


- 2 Install the printer driver in the computer.

**Page 9**

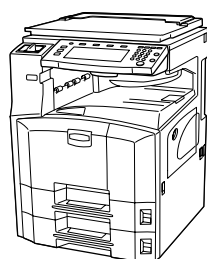
For network connection of this machine (connection of the printer through a network)

<Example connection>



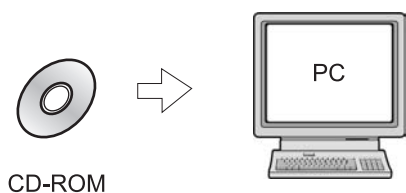
- 1 Connect a network cable (100Base-TX, 10Base-T or the like) to the printer.

**Page 3**



- 2 Perform the network (TCP/IP) setting on the printer.

**Page 5**



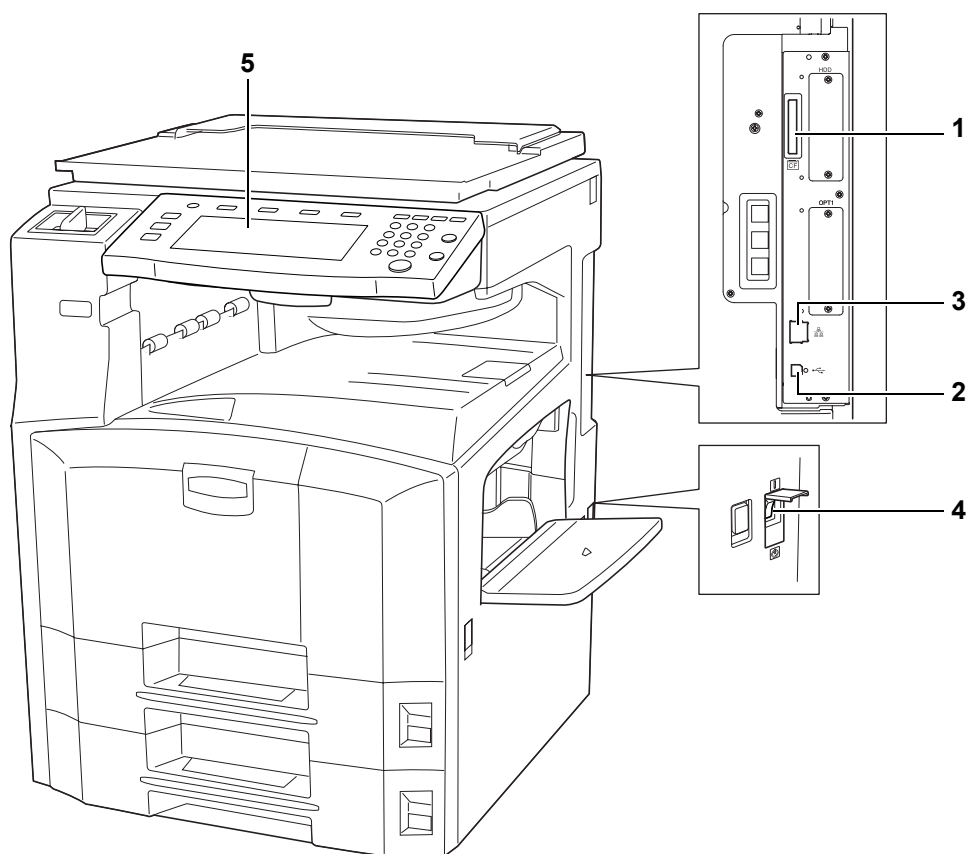
- 3 Install the printer driver in the computer.

**Page 9**

# 1 Preparations

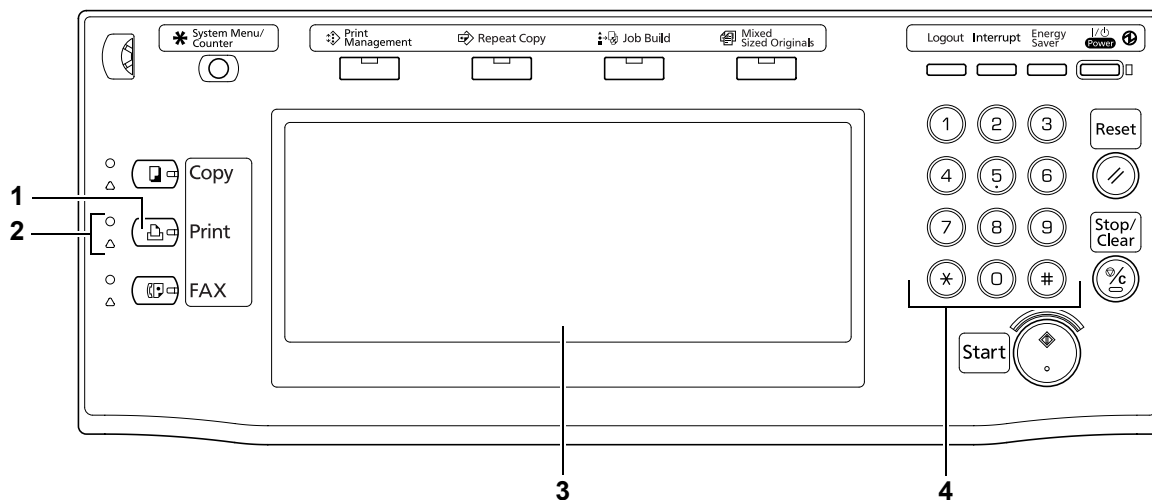
## Names of parts

### Main body



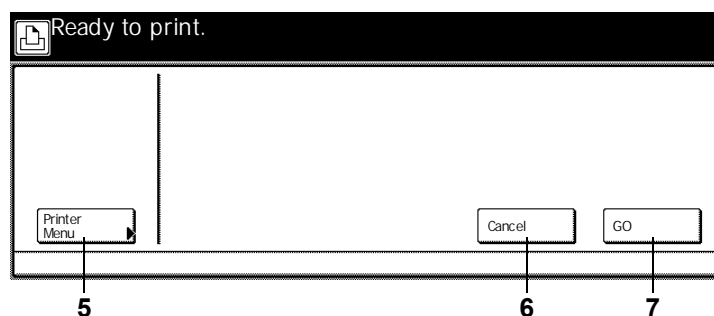
- 1 **Memory card (CompactFlash) slot** — Insert an optional memory card (CompactFlash) here. You can write optional fonts, macros, and forms into the memory card. For details, refer to The Functions Edition of the Operation Guide.
- 2 **USB interface connector** — USB interface based on USB2.0. Use a USB cable to connect to a USB port of a computer.
- 3 **Network interface connector** — Use a 10Base-T/100Base-TX network cable to connect to a network.
- 4 **Main power switch** — When using this machine, turn on the main power switch. When connecting a printer cable or the like, turn off this switch.
- 5 **Operation panel** — When performing setting on this machine, use the operation panel.

## Operation panel



- 1 **Print** key (indicator) — Press this key to light up when selecting the printer mode.
- 2 **Status indicator** — Lights up or blinks to show the status of this machine.  
Lighting green: This machine keeps print data.  
Blinking green: This machine is processing print data.  
Lighting orange: An error has occurred.
- 3 **Touch panel** — Displays the status of the printer and various keys for operation.
- 4 **Numeric keys** — Use these keys when you want to enter a desired value for one of the various settings.

### Touch panel in the printer mode



- 5 **[Printer Menu]** — Press this key to perform printer initial setting.
- 6 **[Cancel]** — Press this key to cancel printing or to cancel error display.
- 7 **[GO]** — Select this key to continue printing or to perform form feed. Also, use this key to switch between on-line and off-line.

## 2 Set-up

### Accessories

- CD-ROM: 1 pcs.
- Operation Guide (this document)

### Items to be prepared by user

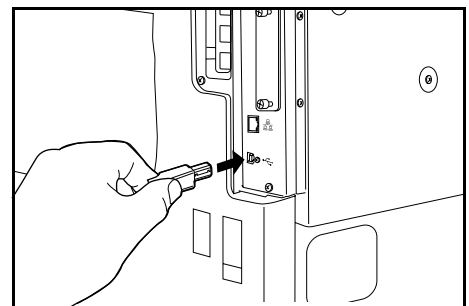
- For USB connection of the printer: USB2.0 compatible cable (based on High-Speed USB, shorter than 5.0 m)
- For network connection of the printer: Network cable (10Base-T or 100Base-TX)

**Note** When using a USB, 10Base-T or 100Base-TX cable, prepare a shielded cable.

### Connecting the printer cable

When using this machine as a local printer, use a USB cable as a printer cable to connect this machine to a computer.

- 1 Connect the printer cable to the USB interface connector located on the rear right of this machine.

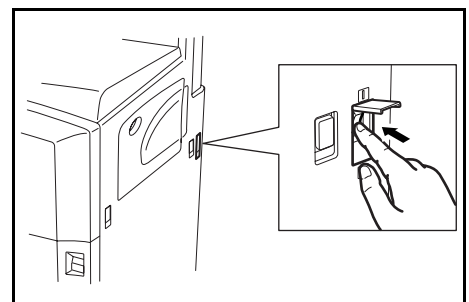


- 2 Connect the other side of the printer cable to the USB interface of the computer.

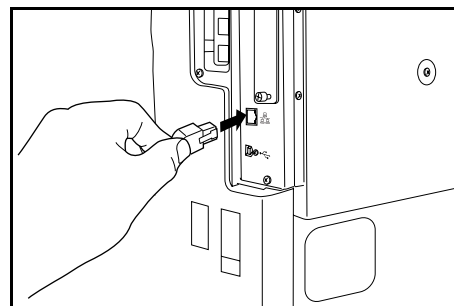
### Connecting the network cable

When using this machine as a network printer, use a network cable (10Base-T or 100Base-TX) to connect this machine to a network.

- 1 Turn the main power switch located on the rear right of this machine OFF (⏻).

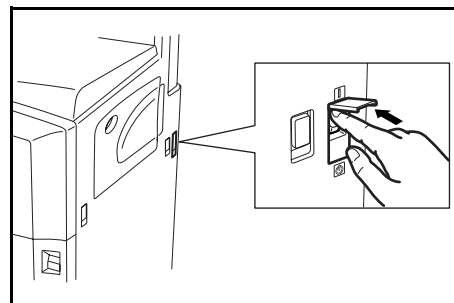


- 2** Connect the network cable to the network interface connector located on the rear right of this machine.



- 3** Connect the other side of the network cable to the hub (concentrator).

- 4** Turn the main power switch of this machine ON ( | ).



- 5** Perform the network setting.  
For details, refer to *Setting the network (TCP/IP)* on page 5.

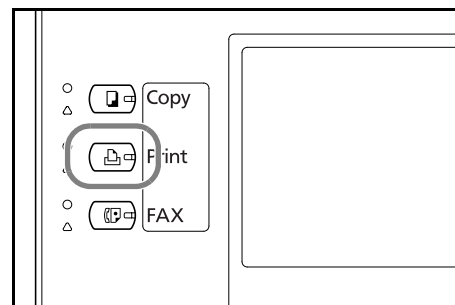


## Setting the network (TCP/IP)

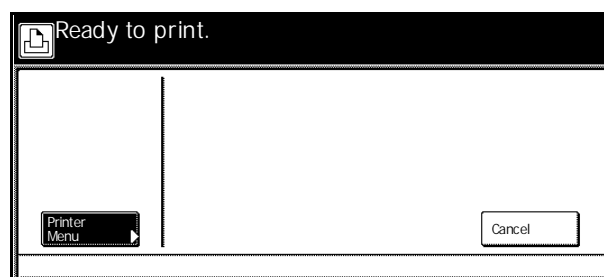
When using this machine as a network printer, you must set the IP address of this machine.

- Notes**
- The IP address that should be registered here will differ depending upon your environment. Check with your network administrator BEFORE performing this setting.
  - If you are using a DHCP or BOOTP server to automatically configure the IP address, you will not need to change the IP address because DHCP or BOOTP server configuration is already enabled as the factory default setting.
  - To cancel the setting, press the **Stop/Clear** key.

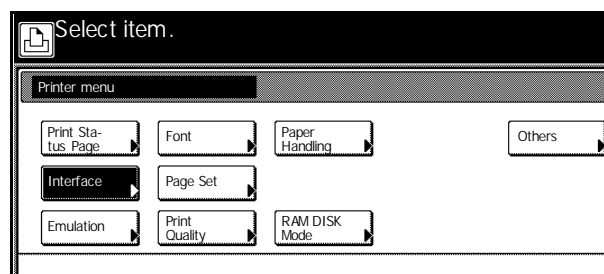
- 1 Press the **Print** key. The machine enters the printer mode.



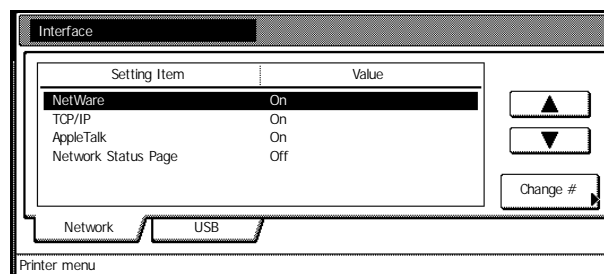
- 2 Press [Printer Menu].



- 3 Press [Interface].



- 4 Press [Network].



- 5 Press [▲] or [▼] to select *TCP/IP* and press [Change #].

Setting Item	Value
NetWare	On
<b>TCP/IP</b>	<b>On</b>
AppleTalk	On
Network Status Page	Off

Network USB

Printer menu

- 6 Press [On] located under *TCP/IP*.

TCP/IP

Off On

Setting Item	Value
<b>DHCP</b>	<b>Off</b>
BOOTP	Off
IP Address	0. 0. 0. 0
Subnet Mask	0. 0. 0. 0
Gateway	0. 0. 0. 0

Back

Printer menu - Interface - Network

- 7 Press [▲] or [▼] to select *DHCP* and press [Change #].

Setting Item	Value
<b>DHCP</b>	<b>Off</b>
BOOTP	Off
IP Address	0. 0. 0. 0
Subnet Mask	0. 0. 0. 0
Gateway	0. 0. 0. 0

Back Close

Change #

Interface - Network

- 8 Press [Off] and press [Close].

DHCP Setting

Off On

Back

Printer menu - Interface - Network - TCP/IP

- 9 Press [▲] or [▼] to select *BOOTP* and press [Change #].

Setting Item	Value
DHCP	Off
<b>BOOTP</b>	<b>Off</b>
IP Address	0. 0. 0. 0
Subnet Mask	0. 0. 0. 0
Gateway	0. 0. 0. 0

Back Close

Change #

Interface - Network

- 10 Press [Off] and press [Close].

BOOTP Setting

Off On

Back

Printer menu - Interface - Network - TCP/IP

- 11 Press [▲] or [▼] to select *IP Address* and press [Change #].

Setting Item	Value
DHCP	Off
BOOTP	Off
IP Address	0. 0. 0. 0
Subnet Mask	0. 0. 0. 0
Gateway	0. 0. 0. 0

interface - Network

- 12 Use the numeric keys to enter the address. Enter the 3-digit address in the highlighted area and press the [#] key.

Fix the entered address three digits at a time by pressing the [#] key.

IP Address

Confirm per 3 lines pressing # key.

192 . 0 . 0 . 0 (with #key)

Printer menu - Interface - Network - TCP/IP

- 13 Enter the next 3-digit address and press the [#] key.

To modify the entered address, press the [#] key to select the 3-digit address to be modified and use the numeric keys to enter the address again.

IP Address

Confirm per 3 lines pressing # key.

192 . 168 . 0 . 0 (with #key)

Printer menu - Interface - Network - TCP/IP

- 14 Use the same procedure to enter the remaining address and then press [Close]. The display returns to the *TCP/IP* screen.

If you press [Back], the entered address is cleared and the previous address is set again.

IP Address

Confirm per 3 lines pressing # key.

192 . 168 . 110 . 204 (with #key)

interface - Network - TCP/IP

- 15 Press [▲] or [▼] to select *Subnet Mask* and press [Change #].

Setting Item	Value
DHCP	Off
BOOTP	Off
IP Address	192.168.110.204
Subnet Mask	0. 0. 0. 0
Gateway	0. 0. 0. 0

interface - Network

- 16 Set the address using the same procedure as IP address setting from steps 12 to 14.

Subnet Mask

Confirm per 3 lines pressing # key.

0 . 0 . 0 . 0 (with #key)

Printer menu - Interface - Network - TCP/IP

- 17 Press [▲] or [▼] to select *Gateway* and press [Change #].

The screenshot shows a configuration window titled 'Interface - Network'. At the top are 'Back' and 'Close' buttons. Below is a table with 'Setting Item' and 'Value' columns. The 'Gateway' row is highlighted. To the right of the table are up and down arrow buttons and a 'Change #' button.

Setting Item	Value
DHCP	Off
BOOTP	Off
IP Address	192. 168. 110. 204
Subnet Mask	255. 255. 248. 0
<b>Gateway</b>	<b>0. 0. 0. 0</b>

interface - Network

- 18 Set the address using the same procedure as IP address setting from steps 12 to 14.

The screenshot shows a 'Gateway' configuration window with a 'Back' button. It instructs the user to 'Confirm per 3 lines pressing # key.' Below this, there are four input boxes, each containing a '0', followed by the text '(with #key)'. The bottom status bar reads 'Printer menu - Interface - Network - TCP/IP'.

Gateway

Confirm per 3 lines pressing # key.

0 . 0 . 0 . 0 (with #key)

Printer menu - Interface - Network - TCP/IP

- 19 When all the setting is complete, press [Close].

This screenshot is similar to the first one, showing the 'Interface - Network' configuration window. In this state, the 'DHCP' row is highlighted instead of 'Gateway'. The 'Gateway' value is now '192. 168. 112. 254'. The status bar remains 'interface - Network'.

Setting Item	Value
<b>DHCP</b>	<b>Off</b>
BOOTP	Off
IP Address	192. 168. 110. 204
Subnet Mask	255. 255. 248. 0
Gateway	192. 168. 112. 254

interface - Network

## Installing the Printer Driver

Install the printer driver on the computer to which this device is connected. If you are connecting the device to a USB interface or network interface, install the driver from the enclosed Product Library CD-ROM.

The example used here describes the procedure for installing the printer driver in Windows XP and Windows Vista, but the same procedure can be used with other versions of the Windows operating system.

- Notes**
- To install the printer driver, you must log on with administrator privileges.
  - Plug and Play is disabled on this device when in Sleep Mode. Wake the device from Sleep Mode before continuing. (Refer to the *Operation Guide* for your machine.)

### Installation Procedure

There are 2 ways to install the printer driver:

- **Express Mode:** If the printer is connected via USB or a network and is turned on, the installer detects the printer. Select Express Mode to perform a standard installation.  
Items installed in Express Mode: KX printer driver and fonts
- **Custom Mode:** This option allows you to select items to be installed as required and to specify the port.

In Express Mode, simply follow the screen prompts to install the software. The description given here explains how to use Custom Mode.

## Installing the Software in Windows XP

This section explains how to install the printer driver in Custom Mode in Windows XP.

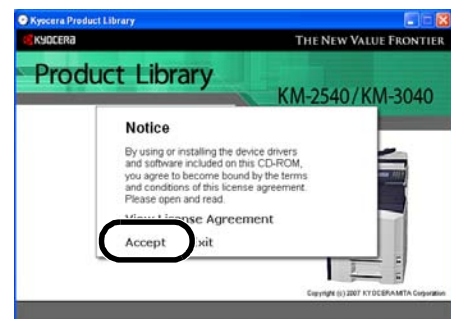
- 1 Refer to *Connecting the printer cable* on page 3 or *Connecting the network cable* on page 3 to connect this device to the computer. After connecting, switch the main power switch to on ( | position) and switch on the computer.

If a Plug and Play window like that shown at right appears, click the **Cancel** button.



- 2 Insert the included *Product Library CD-ROM* into the CD-ROM drive.
- 3 A usage agreement is displayed. Click the **Accept** button to accept the agreement terms. The main menu window then appears.

If the screen is not displayed even after loading the CD-ROM, open the CD-ROM drive letter and double-click on the **setup.exe** file shown in the window.



- 4 Click on **Install Software**.



- 5 Click the **Next** button.



- 6 Select **Custom Mode** and **Driver**. To install the utility software together with the printer driver, select **Utilities** also.  
Click the **Next** button.



**Note** To use Express Mode, select **Express Mode** and click the **Next** button. Then continue with the installation by following the screen prompts.

From this point on, the procedure differs depending on the connection method used. Use the correct procedure for your connection type.

- USB Connection
- Network Connection (Page 11)

## USB Connection

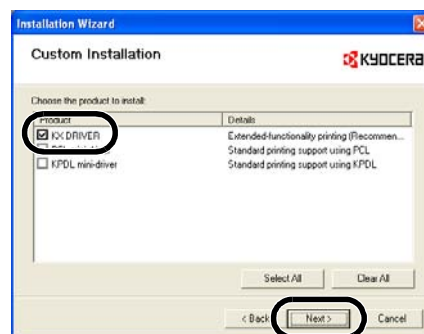
- 7 Select **Universal serial bus (USB)** and click the **Next** button.



- 8 Select this device and click the **Next** button.

- 9 A list of installable options is displayed. Select **KX DRIVER**. To install the utility software also, select the options as required.

Click the **Next** button.



**Note** If a screen for selecting a USB port is displayed, set the port following the screen prompts and click the **Next** button.

- 10 Check the installation settings and then click the **Install** button.

Printer driver installation begins.

If the USB cable is not connected correctly, the window shown on the right appears. When you reconnect the cable correctly, this window closes and installation continues.



When installation ends, a window appears to notify you that the installation was completed successfully. Click the **Finish** button. If you tick the **Print a test page** option, a test page is printed after you click the **Finish** button.

The CD-ROM main menu reappears.

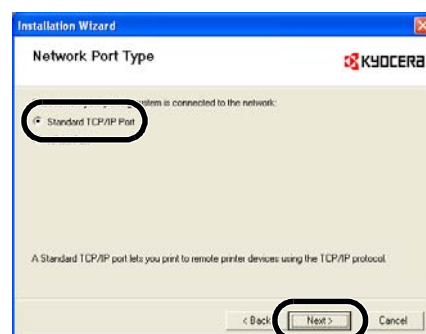
This completes the printer driver installation procedure.

## Network Connection

- 7 Select **Network connection** and click the **Next** button.



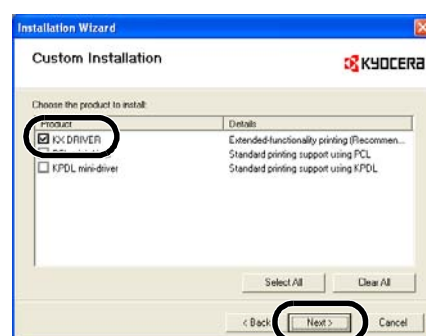
- 8 Select **Standard TCP/IP Port** and click the **Next** button.



- 9 Select this device and click the **Next** button.

- 10 A list of installable options is displayed. Select **KX DRIVER**. To install the utility software also, select the options as required.

Click the **Next** button.



- 11 Check settings such as **Printing system name** and then click the **Next** button.

- 12 Select **Discover printing system** or **Host name or IP address**.

If you selected **Discover printing system**, click the **Next** button to proceed to the next step.

If you selected **Host name or IP address**, enter the host name or IP address for this device and then click the **Next** button to proceed to step 14.



- 13 The installer searches for connected printers. Select this device and click the **Next** button.

To use the host name of this device as the port name, tick the **Use host name for port name** checkbox.



- 14 Check the installation settings and then click the **Install** button.

Printer driver installation begins.

When installation ends, a window appears to notify you that the installation was completed successfully. Click the **Finish** button. If you tick the **Device Settings** checkbox, the printer's **Properties** window appears after you click the **Finish** button. If you tick the **Print a test page** option, a test page is printed after you click the **Finish** button.



The CD-ROM main menu reappears.

This completes the printer driver installation procedure.

## Installing the Software in Windows Vista

This section explains how to install the printer driver in Custom Mode in Windows Vista.

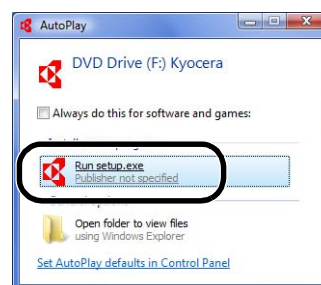
- 1 Refer to *Connecting the printer cable* on page 3 or *Connecting the network cable* on page 3 to connect this device to the computer. After connecting, switch the main power switch to on ( | position) and switch on the computer.

If a Plug and Play window like that shown at right appears, click the **Cancel** button.



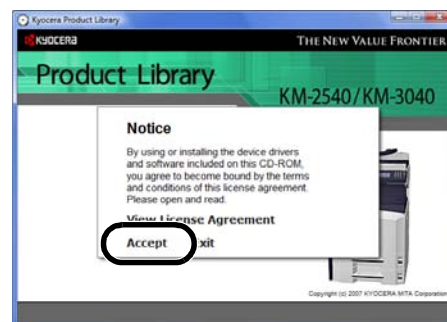
- 2 Insert the included *Product Library* CD-ROM into the CD-ROM drive. If the **AutoPlay** window appears, click **Run setup.exe**.

If a warning message regarding the programs on the CD-ROM is displayed, click **Allow**.



- 3 A usage agreement is displayed. Click the **Accept** button to accept the agreement terms. The main menu window then appears.

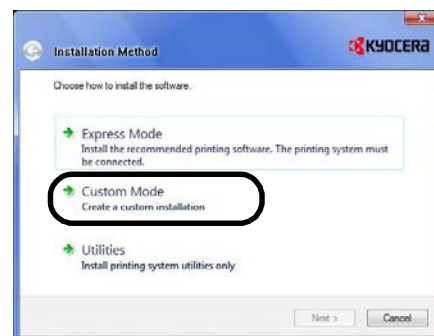
If the screen is not displayed even after loading the CD-ROM, open the CD-ROM drive letter and double-click on the **setup.exe** file shown in the window.



- 4 Click on **Install Software**.

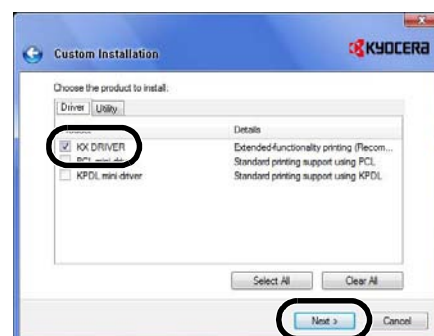


- 5 Click on **Custom Mode**.



**Note** To use Express Mode, select **Express Mode**. Then continue with the installation by following the screen prompts.

- 6 Select **KX DRIVER** in the **Driver** tab. To install the utility software together with the printer driver, click the **Utility** tab and select the required utilities.



**Note** You can also install just the utilities by selecting **Utilities** in step 5.

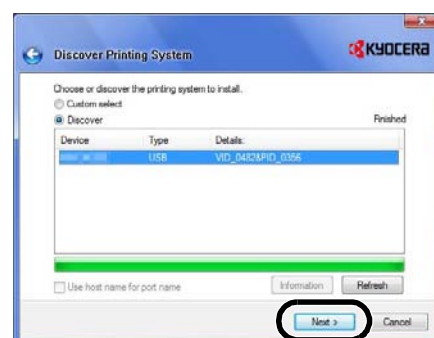
Click the **Next** button.

From this point on, the procedure differs depending on the connection method used. Use the correct procedure for your connection type.

- USB Connection
- Network Connection (Page 15)

## USB Connection

- 7 The installer searches for connected printers. Select this device and click the **Next** button.



- 8 Check the installation settings and then click the **Install** button.

Printer driver installation begins.

When installation ends, a window appears to notify you that the installation was completed successfully. Click the **Finish** button. If you tick the **Print a test page** option, a test page is printed after you click the **Finish** button.

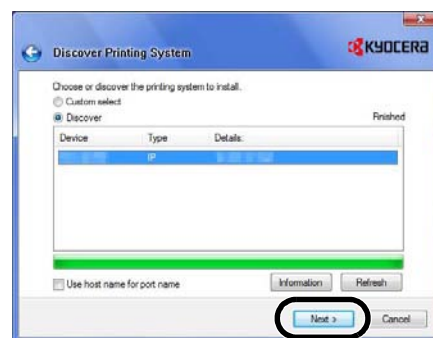
The CD-ROM main menu reappears.

This completes the printer driver installation procedure.

## Network Connection

- 7 The installer searches for connected printers. Select this device and click the **Next** button.

To use the host name of this device as the port name, tick the **Use host name for port name** checkbox.



- 8 Check settings such as **Printing system name** and then click the **Next** button.
- 9 Check the installation settings and then click the **Install** button.

Printer driver installation begins.

When installation ends, a window appears to notify you that the installation was completed successfully. Click the **Finish** button. If you tick the **Print a test page** option, a test page is printed after you click the **Finish** button.

The CD-ROM main menu reappears.

This completes the printer driver installation procedure.

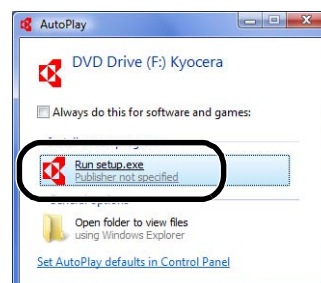
## Installing the Optional Printer Driver Components

When necessary, you can expand the range of printer driver functions by installing the optional printer components.

- 1 Insert the included *Product Library* CD-ROM into the CD-ROM drive.

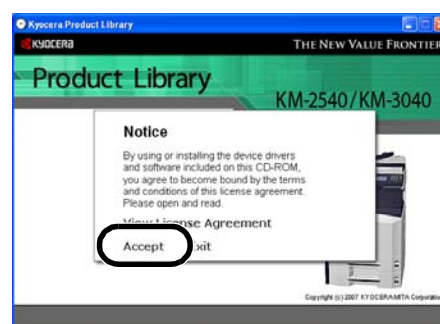
(Windows Vista only)

- If the **AutoPlay** window appears, click **Run setup.exe**.
- If a warning message regarding the programs on the CD-ROM is displayed, click **Allow**.



- 2 A usage agreement is displayed. Click the **Accept** button to accept the agreement terms. The main menu window then appears.

If the screen is not displayed even after loading the CD-ROM, open the CD-ROM drive letter and double-click on the **setup.exe** file shown in the window.



- 3 Click on **Advanced Tools**.



- 4 Click on **Optional Printer Components**.  
Then install the required printer components by following the screen prompts.



## Uninstalling the Printer Driver

- 1 In the **start** menu, select **All Programs** → **Kyocera** → **KM-2540, 3040** → **Kyocera Uninstaller**.
- 2 Tick the **KX DRIVER** checkbox and click the **Uninstall** button.  
The printer driver is removed.



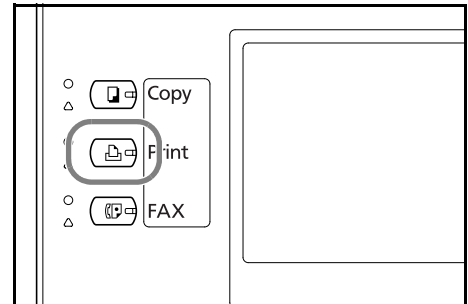
- 3 Click the **Next** button.  
If a system restart message appears, restart the computer by following the screen prompts.

### 3 Canceling printing

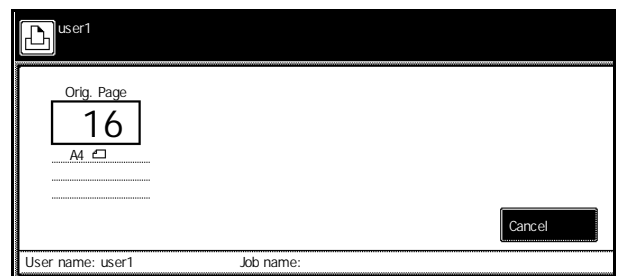
To cancel printing and clear the data, perform the following procedure.

In case that data is on processing, printing can be canceled on the printer screen.

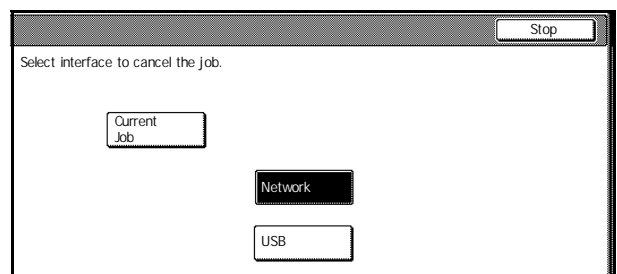
- 1 Press the **Print** key. The machine enters the printer mode.



- 2 Press [Cancel].



- 3 Select the interface through which printing to be canceled is performed.  
To stop canceling printing, press [Stop].  
Printing is canceled.





**QUALITY  
CERTIFICATE**

THIS ACHIEVES THE RESULTS  
OF A HIGH STANDARD OF  
PERFORMANCE

