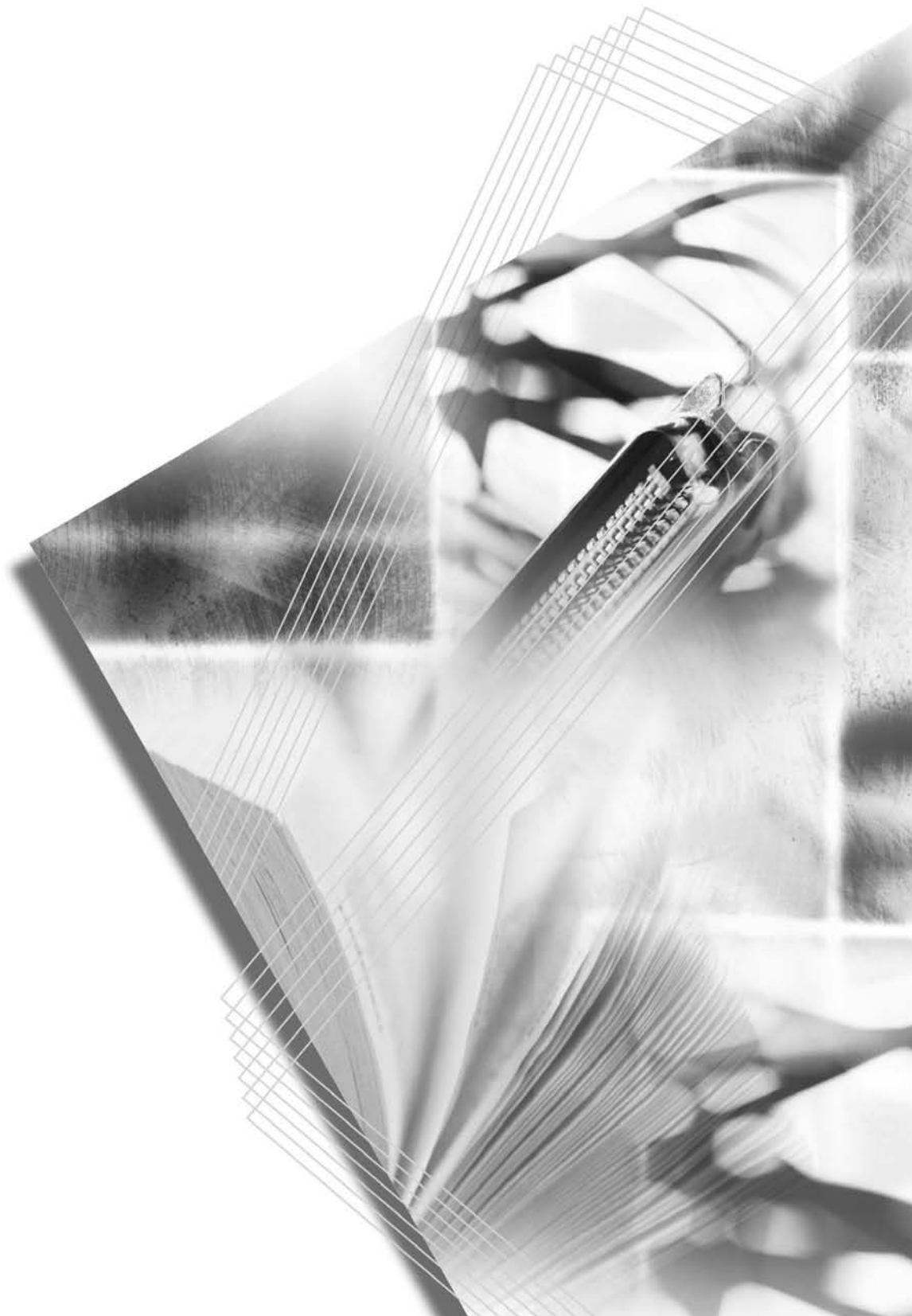




FS-1016MFP
FS-1116MFP

Product Library

Installation Guide for Software



Contents

- Loading Software 1
 - Installing the Software in Windows XP 1
 - Installing the Software in Windows Vista 4
- Remove Software 7
- Installing the software when using the Print Server (IB-110) 8
 - Installing the Software in Windows XP 8
 - Installing the Software in Windows Vista 9

Loading Software

Installing the Printer Driver and Scanner Driver.

Ensure the machine is plugged in and connected to the computer's USB port before installing software from the CD-ROM.

Required operating systems (OS) for using the Software:

Microsoft Windows 98SE/Me/2000/XP/Vista

The example used here describes the procedure for installing the printer driver in Windows XP and Windows Vista, but the same procedure can be used with other versions of the Windows operating system.

Installing the Software in Windows XP

- 1 Switch on the PC and activate Windows.

NOTE: If the **Welcome to the Found New Hardware Wizard** dialog box displays, select **Cancel**.



- 2 Insert the CD-ROM (Product Library) into the CD-ROM drive. Once the installation program launches, the License Agreement Notice is displayed.

NOTE: If the installation program fails to launch, use *Windows Explorer* to access the CD-ROM and double-click **Setup.exe**.



- 3 Click **View License Agreement** to display and read it.
- 4 Click **Accept** to proceed.



- 5 Click **Select Language**.



- 6 Click the language to be used.

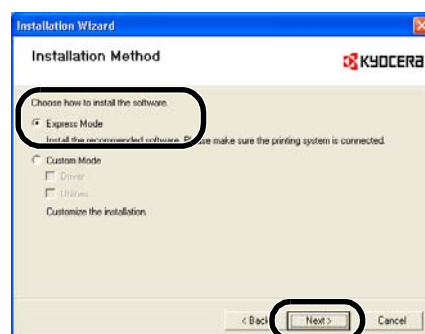
- 7 Click **Install Software**. The **Installation Wizard** starts.



- 8 Click **Next**.

- 9 For the simple, default installation, select **Express Mode** and click **Next**.

NOTE: When selecting **Custom Mode**, refer to *Custom Installation on page 3* for operation.



- 10 Select the machine to use and click **Next**.

NOTE: If the machine to use is not displayed, ensure that the machine is turned on and that the USB cable is properly connected.



-
- 11 Click **Install**. The installation program installs the software.

NOTE: When installing software for Windows XP, if a software installation warning for an unsigned device driver is displayed, click **Continue Anyway** to bypass the warning and install the driver. All device drivers have been fully tested.



- 12 When the installation is complete, the **Installation Completed** window is displayed.

Click **Finish**. The installation program finishes.

If a message indicating restart is displayed, restart the computer following the on-screen instructions.

Custom Installation

The *Custom Mode* is the user selection mode and can be customized the install options.

- 1 Follow steps 1 to 8 of *Installing the Software in Windows XP* on page 1.
- 2 Click **Custom Mode** and select **Driver** and **Utilities**.
Click **Next**.
- 3 Select **Universal serial bus (USB)** and click **NEXT**.
- 4 Select the software packages you wish to install, and clear the ones you do not want installed.
- 5 Click **Next**.
- 6 Click **Install**. The installation program installs the software.

NOTE: If the USB cable is not properly connected, a screen instructing to connect the USB cable is displayed. When the cable is properly connected, the screen will disappear and the installation will resume.

- 7 When the installation is complete, the **Installation Completed** window is displayed.

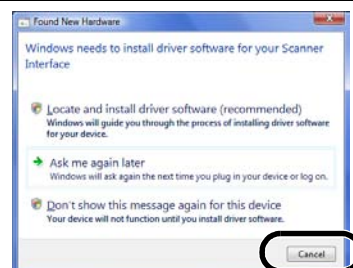
Click **Finish**. The installation program finishes.

If a message indicating restart is displayed, restart the computer following the on-screen instructions.

Installing the Software in Windows Vista

- 1 Switch on the PC and activate Windows.

NOTE: If the Plug and Play screen appears, select **Cancel**.

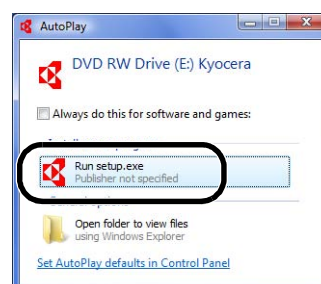


- 2 Insert the CD-ROM (Product Library) into the CD-ROM drive. Once the installation program launches, the License Agreement Notice is displayed.

If the **AutoPlay** screen appears, click **Run setup.exe**.

If a caution screen concerning the programs in the CD-ROM is displayed, click **Allow**.

NOTE: If the installation program fails to launch, use *Windows Explorer* to access the CD-ROM and double-click **Setup.exe**.



- 3 Click **View License Agreement** to display and read it.
- 4 Click **Accept** to proceed.



- 5 Click **Select Language**.



- 6 Click the language to be used.

- 7 Click **Install Software**. The Installation Wizard starts.



- 8 For the simple, default installation, click **Express Mode**.

NOTE: When selecting **Custom Mode**, refer to *Custom Installation on page 6* for operation.



- 9 Select the machine to use and click **Next**.

NOTE: If the machine to use is not displayed, ensure that the machine is turned on and that the USB cable is properly connected.



- 10 Click **Install**. The installation program installs the software.

NOTE: When installing the software in Windows Vista, if a caution on installation of device driver to be used is displayed, click **Install this driver software anyway**.



- 11 When the installation is complete, the **Installation Completed** window is displayed.

Click **Finish**. The installation program finishes.

If a message indicating restart is displayed, restart the computer following the on-screen instructions.

Custom Installation

The *Custom Mode* is the user selection mode and can be customized the install options.

- 1 Follow steps 1 to 7 of *Installing the Software in Windows Vista on page 4*.
- 2 Click **Custom Mode**.
- 3 Select the software packages to install from the **Driver** tab and the **Utility** tab and cancel the packages that you do not want to install.
Click **Next**.
- 4 Select the machine to use and click **Next**.

NOTE: If the machine to use is not displayed, ensure that the machine is turned on and that the USB cable is properly connected.

- 5 Click **Install**. The installation program installs the software.

NOTE: When installing the software in Windows Vista, if a caution on installation of device driver to be used is displayed, click **Install this driver software anyway**.

- 6 When the installation is complete, the **Installation Completed** window is displayed.

Click **Finish**. The installation program finishes.

If a message indicating restart is displayed, restart the computer following the on-screen instructions.

Remove Software

When you fail in the installation of Software, please uninstall it once.

- 1 In the **start** menu, select **All Programs** → **Kyocera** → **FS-1016MFP_FS-1116MFP** → **Kyocera Uninstaller**.

If a caution screen concerning the program is displayed, click **Allow**.

- 2 Select the software packages you wish to uninstall, and click **Uninstall**.



- 3 Click the **Next**.

- 4 Click the **Finish**.

If a message indicating restart is displayed, restart the computer following the on-screen instructions.

Installing the software when using the Print Server (IB-110)

When using the Print Server (IB-110), perform the following procedure to install the software.

For setup of the machine and the method of connection, refer to *Print Server's Set up Guide*.

Installing the Software in Windows XP

- 1 Follow steps 1 to 8 of *Installing the Software in Windows XP* on page 1.
- 2 For the simple, default installation, select **Express Mode** and click **Next**.

NOTE: When selecting **Custom Mode**, refer to *Custom Installation* on page 8 for operation.

- 3 Select the machine to use and click **Next**.

NOTE: If the machine to be used is not displayed, ensure that the machine is turned on and that the network cable is properly connected.

- 4 Enter the name of the printing system and click **Next**.
- 5 Click **Install**. The installation program installs the software.
- 6 When the installation is complete, the **Installation Completed** window is displayed.
Click **Finish**. The installation program finishes.

If a message indicating restart is displayed, restart the computer following the on-screen instructions.

Custom Installation

The *Custom Mode* is the user selection mode and can be customized the install options.

- 1 Follow steps 1 to 8 of *Installing the Software in Windows XP* on page 1.
- 2 Click **Custom Mode** and select **Driver** and **Utilities**.
Click **Next**.
- 3 Select **Network connection** and click **NEXT**.
- 4 Select **KMPrint Port** and click **Next**.
- 5 Select the model and click **Next**.
- 6 Click **Select All** and click **Next**.
- 7 Enter the name of the printing system and click **Next**.
- 8 Click **Install**. The installation program installs the software.
- 9 Click **Add Port**. The **KMprint Add Port Wizard** window is displayed.

-
- 10 Enter the IP address or host name and click **Next**.

NOTE: Click **Search** to search available printers within the network, and select it.

- 11 Enter the Destination Printer Port Name and click **Next**.
- 12 Click **Finish**.
- 13 Select the printer port and click **OK**.
- 14 When the installation is complete, the **Installation Completed** window is displayed.
Click **Finish**. The installation program finishes.
If a message indicating restart is displayed, restart the computer following the on-screen instructions.

Installing the Software in Windows Vista

- 1 Follow steps 1 to 7 of *Installing the Software in Windows Vista on page 4*.
- 2 For the simple, default installation, click **Express Mode**.

NOTE: When selecting **Custom Mode**, refer to *Custom Installation on page 9* for operation.

- 3 Select the machine to use and click **Next**.

NOTE: If the machine to be used is not displayed, ensure that the machine is turned on and that the network cable is properly connected.

- 4 Enter the name of the printing system and click **Next**.
- 5 Click **Install**.
- 6 Select the printer port and click **OK**.
- 7 When the installation is complete, the **Installation Completed** window is displayed.
Click **Finish**. The installation program finishes.
If a message indicating restart is displayed, restart the computer following the on-screen instructions.

Custom Installation

The *Custom Mode* is the user selection mode and can be customized the install options.

- 1 Follow steps 1 to 7 of *Installing the Software in Windows Vista on page 4*.
- 2 Click **Custom Mode**.
- 3 Click **Select All** and click **Next**.
- 4 Follow step 3 and after of *Installing the Software in Windows Vista on page 9*.

MEMO

MEMO

**QUALITY
CERTIFICATE**

This machine has passed
all quality controls and
final inspection

