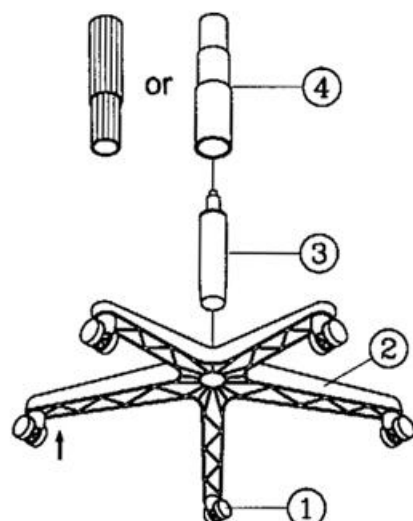


## PART LIST

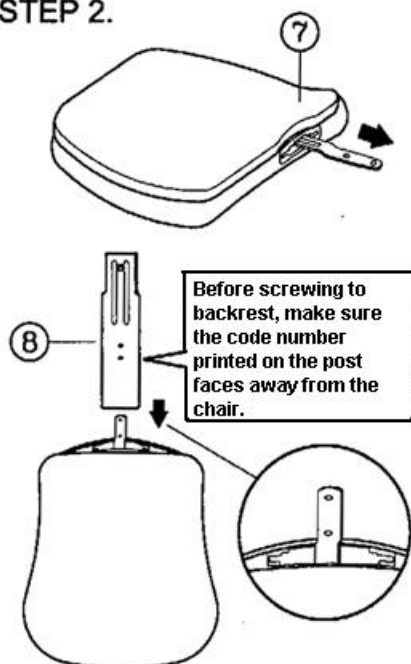
Remove all items from the carton . Verify all pieces before assembly.

KEY QTY DESCRIPTION			KEY QTY DESCRIPTION			KEY QTY DESCRIPTION		
1	5	Caster	7	1	Backrest	13	1	Backrest Post Bellow
2	1	Base	8	1	Backrest Post	14	2	Arm Bracket
3	1	Seat Post	9	2	Backrest Screw	15	2	Armrest
4	1	Seat Post Cover	10	1	M5 Size Allen Wrench	16	2	Arm Width Adjustment Knob + Washers
5	1	Mechanism	11	1	Backrest Bolt + Washers			
6	1	Seat	12	1	M6 Size Allen Wrench			

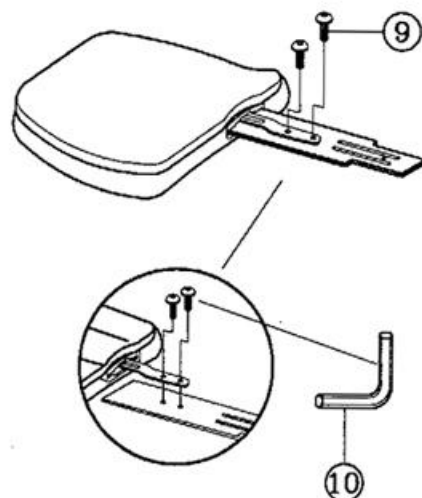
### STEP 1.



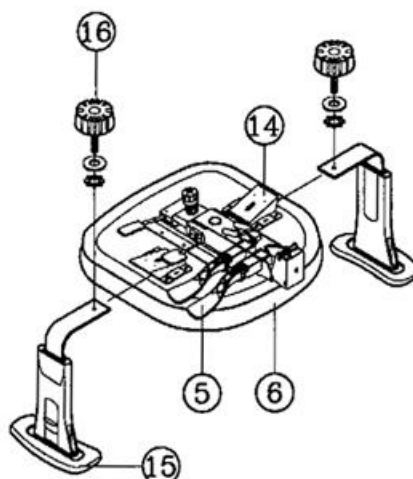
### STEP 2.



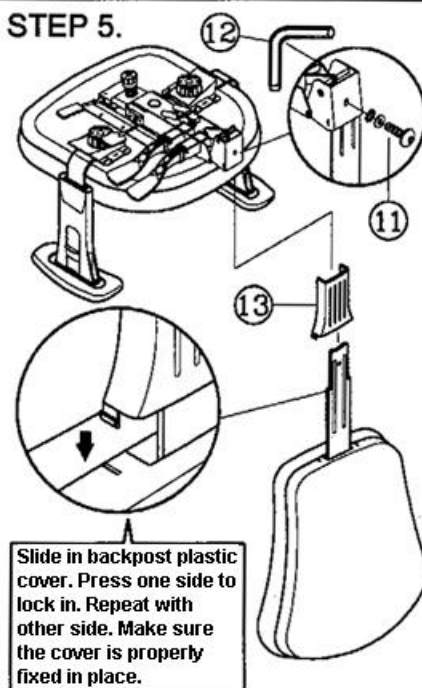
### STEP 3.



### STEP 4.



### STEP 5.



### PREVENTIVE MAINTENANCE AND WARNING!

- USE THIS PRODUCT ONLY FOR SEATING ONE PERSON AT A TIME.
- DO NOT USE THIS CHAIR AS A STEP LADDER.
- DO NOT USE CHAIR UNLESS ALL BOLTS, SCREWS AND KNOBS ARE TIGHTENED. AT LEAST EVERY SIX MONTHS, CHECK ALL BOLTS, SCREWS AND KNOBS TO BE SURE THEY ARE TIGHT.
- IF ANY PARTS ARE MISSING, DAMAGED OR WORN, STOP USE OF THE PRODUCT UNTIL REPAIRS ARE MADE USING FACTORY AUTHORIZED PARTS.
- FAILURE TO FOLLOW THESE WARNINGS COULD RESULT IN SERIOUS INJURY.

FM4080