



GO BEYOND UNLOCKING DOORS.
UNLOCK YOUR ORGANIZATION'S POTENTIAL.

CARD IDENTITY SYSTEM SELECTION GUIDE

FARGO[®]
Part of HID Global 

FARGO CARD IDENTITY SYSTEMS PRODUCE THE ID CARDS THAT MAKE ORGANIZATIONS WORLDWIDE MORE PRODUCTIVE.

The end of the lanyard is where the full potential of your ID cards begins.

They've gone beyond simply presenting names and faces. ID cards today, from proximity cards to multifunction smart cards, have exciting capabilities: Financial transactions. Network access control.

Secure records management. Organizations of all sizes are tapping the power of these card-based applications to help them streamline operations, improve efficiency and tighten security.

More capable cards require a more capable system.

Card-based applications require higher-level ID cards — cards that are more capable, durable and secure. The types of cards that Fargo Card Identity Systems are designed to produce.

Want durable, great-looking smart cards for your campus card program? Build your system around Fargo High Definition Card Printer/Encoders. Want secure, on-the-spot issuance of customer cards anywhere in the country? Fargo Asure ID® Software will make it happen. Need to protect your cards from counterfeiting or tampering? Fargo Visual Security Solutions™ are the ultimate deterrent. Fargo Card Identity Systems bring all these elements together to produce exactly the ID cards your card-based applications require.





Start with expert guidance.

With so many possible configurations, what's the right Fargo Card Identity System for your organization? Ask an authorized Fargo integrator. With more than 140,000 installations around the world, they're the experts on building card identity systems that help make your organization more productive — whether you issue multifunction smart cards, or basic photo IDs.



Finding your Fargo Card Identity System begins with a simple mouse click.

With so many Fargo printer/encoders, software packages and Visual Security Solutions to choose from, where do you start? Our online Create a System tool gives you a quick and helpful overview of how Fargo system components go together, and what level of security they provide.



visit fargo.com/SystemBuilder

to discover which Fargo Card Identity System is right for you.

**MAKE YOUR ID CARDS REFLECT THE PEOPLE WHO WEAR THEM:
SMART, HARD-WORKING, DEPENDABLE AND COMPLETELY AUTHENTIC.**



HDP5000

Produces cards in High Definition, from general ID to multi-function smart cards, for a new level of ID card production.

- Prints on the reverse side of HDP® Film that is then fused to the card, for outstanding print quality over embedded electronics and greater durability and security for basic IDs.
- Exceptionally reliable – because printheads never touch the card during the HDP process, they're protected from damage.
- Modular design allows dual-sided print module, encoding modules, laminator or simultaneous dual-sided laminator.
- Affordably priced.



HDP5000 Card Identity System



HDP600

Produces high-security smart cards for FIPS 201 and other government and corporate ID applications.

- Dual- or single-sided High Definition Printing™ (HDP). Prints, encodes and laminates cards with embedded electronics in one pass.
- Supports advanced e-card applications by encoding up to three embedded technologies, plus mag stripe.
- Deters counterfeiting with HDP Film and optional holographic overlaminates.
- HDP600 CR100 prints oversized ID badges for greater event security.



HDP600 with Fargo Asure ID software



Visit fargo.com/comparisons
for more information on Fargo printer/encoders.



DTC550

The card production workhorse for diverse applications.

- Can encode up to three different smart card technologies, plus magnetic stripe, in the same pass as card printing and lamination.
- Integrates with your existing infrastructure.
- Allows for centralized or distributed issuance.
- Perfect for high-volume card printing and encoding.



DTC550 Card Identity System



DTC400

The easy, flexible way to print and encode ID cards.

- Dual- or single-sided Direct-to-Card printing of photos, bar codes and digital signatures.
- Upgradeable with smart card, proximity card (read only) and mag stripe encoding options.
- Exclusive SmartLoad™ Ribbon Cartridge.



DTC400 Card Identity System



PERSONA® C30

Ensures simple ID card printing from start to finish.

- Delivers sharp, colorful, durable plastic ID cards.
- Reliable and low-maintenance, with simple set-up, loading and operation.
- Upgradeable with mag stripe and dual-sided printing modules.
- Also available in monochrome only (M30).



Persona C30 Card Identity System

POWERFUL ID CARD SOFTWARE FOR ORGANIZATIONS THAT ISSUE THOUSANDS OF ID CARDS PER DAY... OR JUST ONE CARD PER DAY.

FARGO ASURE ID SOFTWARE

A powerful suite of ID card software to meet any organization's needs.



Fargo Asure ID Exchange™

- Comprehensive ID card design, production and management.
- For organizations wanting intuitive card design, data management and advanced card personalization.
- **Design • Print • Manage • Share • Control**



Fargo Asure ID Enterprise™

- Ideal photo ID software for issuance over corporate networks.
- The choice for organizations that perform ID card issuance in a networked environment.
- **Design • Print • Manage • Share**



Fargo Asure ID Express™

- Powerful yet affordable photo ID software.
- Easy-to-use software for designing and producing photo IDs in stand-alone systems.
- **Design • Print • Manage**



Fargo Asure ID Solo™

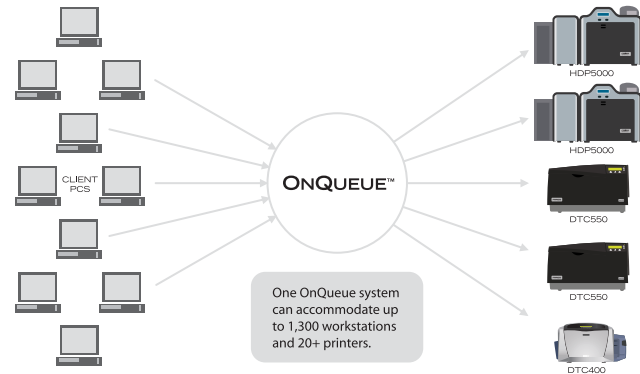
- Basic entry-level photo ID software.
- Provides quick and easy single-sided card design and printing.
- **Design • Print**

ONQUEUE™ CARD PRODUCTION SOFTWARE

The scalable, centralized solution for credential issuance.



- Intuitive software transforms multiple card issuance stations into one centralized system, allowing organizations to improve efficiency.
- Scalable system allows exactly the capacity needed. Up to 1300 client workstation PCs can send card jobs to a central server. One system can manage as few as 2 printers to more than 20.
- Patent-pending, smart load balancing feature directs the next card in queue to the next available printer for even job distribution. The system identifies any printer problems and redirects jobs, eliminating manual retracking, rerouting and reprinting.
- Central database makes management, back-up and archiving easy.
- Ideal for any organization with high-volume card printing needs.



ONE LOOK TELLS COUNTERFEITERS THAT THEY'RE DEFEATED BEFORE THEY EVEN TRY.

HOLOGRAPHIC HDP FILM

High Secure holograms on HDP Film — the ultimate in visual security. Only for Fargo HDP printer/encoders.



Custom High Secure HDP Film: Your unique holographic image, plus Visual Security Elements (VSEs) such as morphing images and micro text, all integrated within HDP Film. Extremely difficult to forge, yet easy to authenticate.



Standard High Secure HDP Film: Fargo's standard Orbit Globe hologram featuring multiple VSEs imaged onto HDP Film. Like the custom film, any attempt to peel apart the layers destroys the image for a tamper-evident solution.

HOLOGRAPHIC OVERLAMINATES

Choose from Secure or High Secure holographic lamination. Only for Fargo HDP or Direct-to-Card lamination modules.



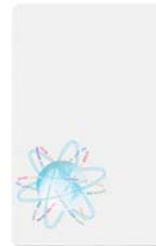
Custom High Secure Overlaminates: Your custom holographic design integrated with a combination of VSEs produces a hard-to-duplicate ID card. Also available in a standard design.



Custom Secure Overlaminates: A cost-effective solution that uses simple, 2D movement of your graphic or text to create a holographic design.



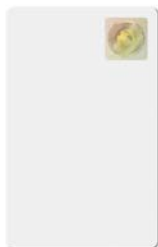
Custom Secure Express™ Overlaminates: The fast track to basic, yet customized holographic protection. Fast delivery. Low minimum order requirements. Supports basic designs and text.



Standard High Secure Overlaminates: Our standard Orbit Globe hologram featuring multiple VSEs. An off-the-shelf solution where incremental security is important.

HOLOGRAPHIC FOIL CARDS

Cost-effective visual security for organizations without card lamination equipment.



Custom HoloMark™ Card:

Your custom 3D image in a high-resolution hologram that's permanently embedded onto the card surface. Virtually impossible to duplicate, yet easy to validate. Also available in a standard design.

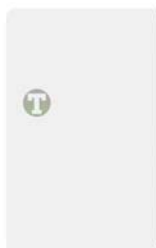


Custom Translucent Foil Card: A secure hologram of your custom design in a translucent 2D foil embedded just below the card surface for maximum security and durability.



Custom VeriMark™ Card:

Your custom 2D graphic hot stamped in gold onto a silver metallic foil. Visual security with minimum cost and delivery time.



Custom Metallized Foil Card: Your custom design in a metallized hologram that's layered just below the card surface for maximum durability and resistance to counterfeiting or tampering.



SECUREVAULT™

Guards against theft and misuse of ID card-making materials.

- Unique hardware and software system for protecting an often-overlooked part of card identity systems — materials security.
- Keeps materials under constant surveillance through inventory management software, RFID technology and an electronically locked materials safe.
- Tracks the movement and use of blank cards, printer ribbons, holographic films and other sensitive materials. Provides secure audit trails and asset management.

SecureVault 2000 with workstation (above) and the SecureVault 1000 (right).



**DON'T THINK YOU HAVE TO DO THIS ALONE.
FARGO HAS EXPERTS ALL OVER THE WORLD.**



FARGO SECURE
INTEGRATORS

AUTHORIZED FARGO INTEGRATORS

From corporations to schools to government agencies, our integrators put the power of Fargo Card Identity Systems to work.

Authorized Fargo integrators have one critical mission: help you get the most from your Fargo Card Identity System. After installing more than 140,000 systems in over 80 countries, Fargo integrators have the real-world experience to implement anything from high-security access control to charging a cafeteria lunch with a student ID. And Fargo integrators keep up to date with ongoing training from Fargo. So when your security depends on a Fargo Card Identity System, depend first on your authorized Fargo integrator.



FARGO SECURE
**PROFESSIONAL
SERVICES**

FARGO PROFESSIONAL SERVICES

A partnership that helps you successfully implement or upgrade large-scale card identity programs.

Working on a large card identity system can be a complex, time-consuming program — one that requires specialized experience. That's why we support authorized Fargo integrators with our own dedicated team: Fargo Professional Services. These experts offer a proven methodology for optimizing the security and performance of sophisticated and often customized card identity systems. From planning through integration and deployment, Fargo Professional Services works in tandem with your integrator to ensure a successful program.



FARGO ACCESSORIES

Customize and complete your card identity system with digital cameras, photography backdrops and other accessories.

Beyond printer/encoders, software and materials, we offer a variety of accessories specifically selected to work with Fargo Card Identity Systems. Digital cameras are an essential part of any photo ID system, and our USB-connected cameras deliver the sharp, clear images that today's high-quality photo ID cards require. Our backdrops are easy to set up and enhance the appearance of your ID photos. Fargo's entire selection of accessories provides a simple, turnkey way to complete your system.

STEP 5 DESIGN CONCEPTS AND PHOTOGRAPHY

Design the graphics and typography of your card

When designing the look of your ID cards, keep in mind that it's more than just a security device and functional tool — it's also an extension of your organization's image and brand. An attractive and professional card will reinforce the right message about your organization and its employees. And because a well-designed card is more likely to be worn, it will go a long way toward ensuring the effectiveness of your entire card program.

"This is tougher than I thought. I'm just not artistic!" Card design is a challenge. If you can't amplify the talents of a talented graphic designer, it that's not an option, work with an artist, person within your company.

Online check photo component can be a valuable resource in your efforts to design professional-looking cards with dynamic imagery.



GET YOUR **FREE** GUIDE TO DESIGNING ID CARDS.

Learn how to create dynamic, effective and secure ID cards.

Fargo's 28-page Card Design Guide Book shows you how to create IDs that:

- Reflect your brand identity.
- Enhance your physical and logical security.
- Reduce your vulnerability to ID counterfeiting.
- Increase your efficiency and productivity.

Also includes a bonus section: A gallery of ID cards intended to provide a creative spark for your own designs.

 Visit fargo.com/FreeGuide to get your free copy of Fargo's ID Card Design Guide.





This data sheet is for informational purposes only. Fargo Electronics makes no warranties, expressed or implied, in this summary. Company and product names and data used in sample output are fictitious. Specifications are subject to change without notice. Asure ID Solo, Asure ID Express, Asure ID Enterprise, Asure ID Exchange are trademarks and Asure ID is a registered trademark of HID Global Corporation. Visual Security Solutions, HoloMark, VeriMark, Secure Express, SmartLoad, OnQueue and High Definition Printing are trademarks, and Fargo, Persona, HDP and DTC are registered trademarks of Fargo Electronics, Inc. All other trademarks and registered trademarks are property of their respective companies. This is not an offer of sale.

© 2007, Fargo Electronics, Inc. All rights reserved.

SL1428-REV0710

www.fargo.com

Headquarters

Phone: +1 (952) 941-9470

Phone: (800) 459-5636

E-mail: sales@fargo.com

Washington D.C.

Phone: (800) 459-5636

E-mail: govsales@fargo.com

Asia Pacific

Phone: +852 3160-9800

E-mail: asia.sales@fargo.com

Europe

Phone: +44 (0) 1440 714 850

E-mail: europe.sales@fargo.com

