

## **StarBoard FX/FX-DUO Wireless Connection Setup Manual (Windows 7)**

### **1. Preface**

To establish the wireless connection between StarBoard FX/FX-DUO and the PC, the following devices are necessary:

Wireless USB Device Server:	silex technology SX-2000WG+
USB2.0 WiFi Adapter:	Planex GW-US54Mini2W

StarBoard Software 9.2 or higher is necessary prior to setup of the wireless connection. Make sure to select "**FX/FX-DUO**" in the **Board Type** screen during the installation of StarBoard Software.

#### **Installation of GW-US54Mini2W driver**

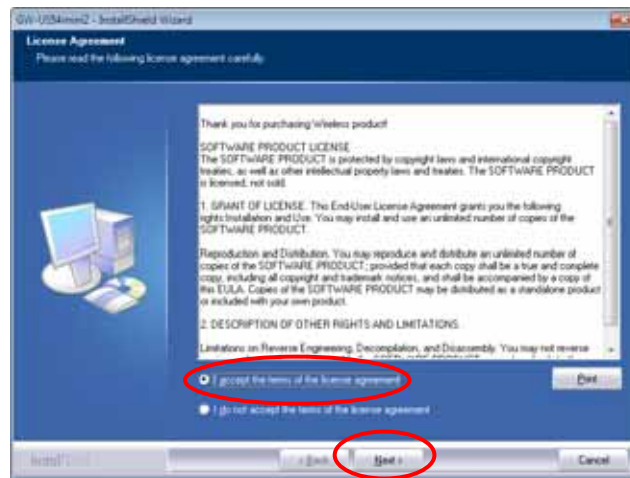
- Log on as Administrator to install.
- Do not plug the USB2.0 WiFi Adapter into the computer until 4(3).
- Disable the firewall on Windows Vista and commercial security software during installation.

### **2. GW-US54Mini2W Setup**

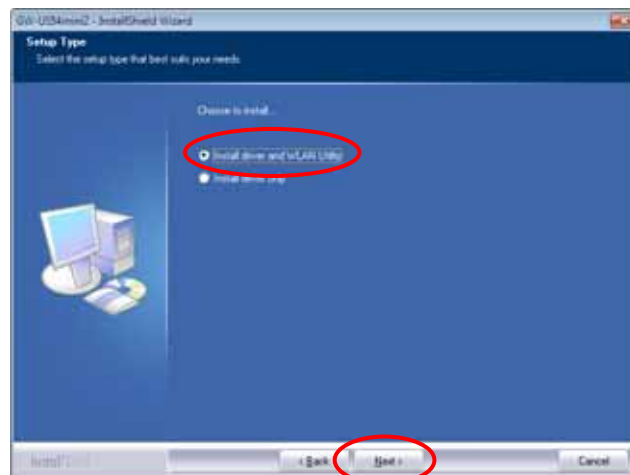
(1) Run the installer of GW-US54Mini2W. If the menu is not displayed automatically, double-click on " GW-US542090319.exe" in the CD-ROM root.

(2) If the User Account Control window is shown, select "Yes".

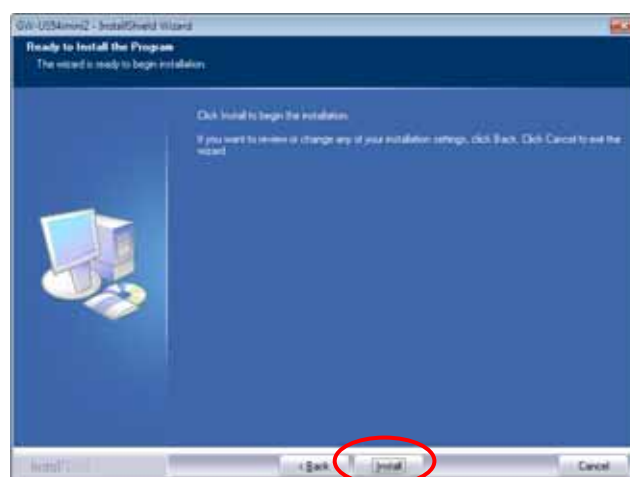
(3) Select “I accept the .....” and Select “Next”.



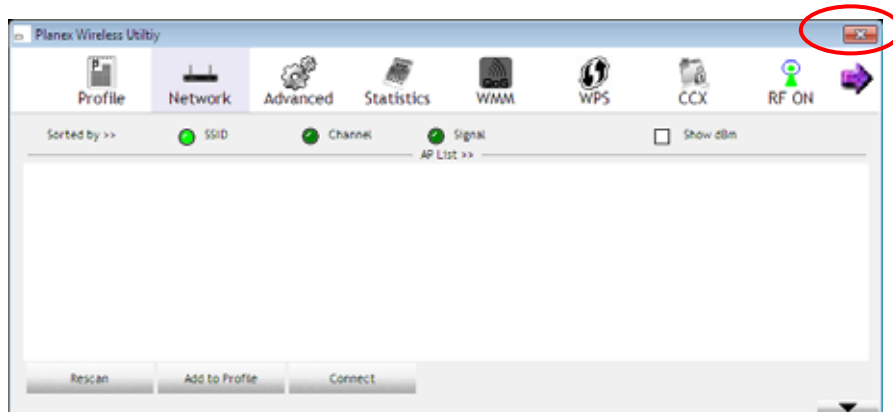
(4) Select “Install driver and WLAN Utility” and Select “Next”..



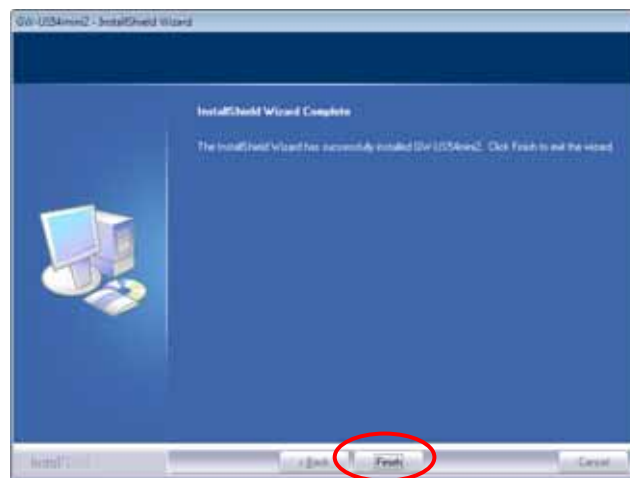
(5) Select “Install”. Installation is performed.



- (6) If the “Planex Wireless Utility” window is shown, click “x” button to close the window by force.



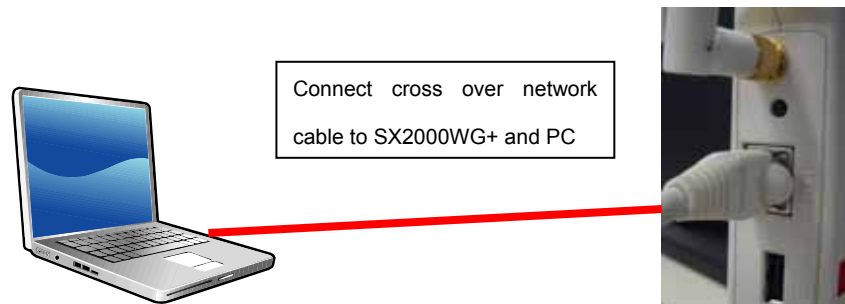
- (7) Select “Finish”.



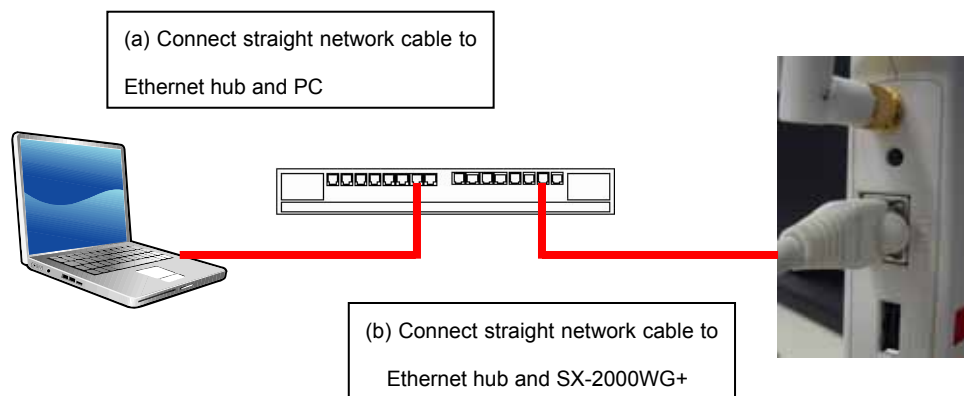
### 3. Device Server SX-2000WG+ Setup

(1) Please connect SX-2000WG+ and the PC with one of the following methods:

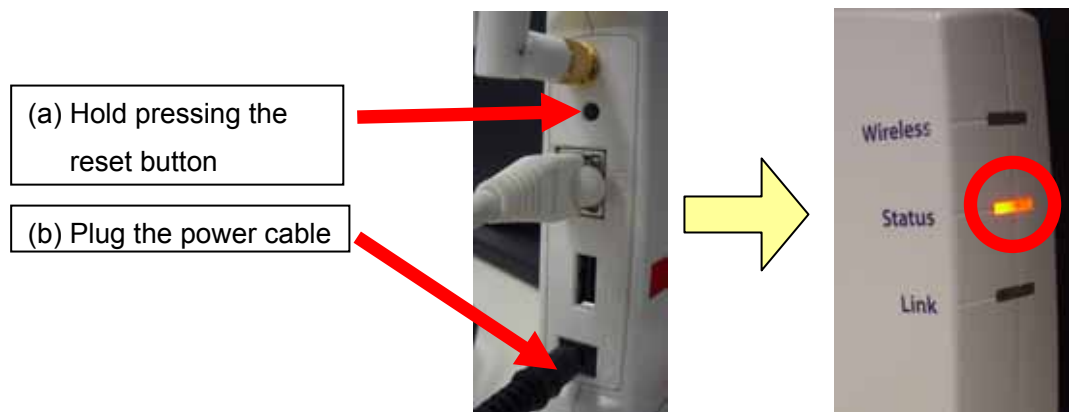
(a) Prepare a network cross over cable to connect SX-2000WG+ and PC



(b) Prepare two network straight cables and an Ethernet hub to connect SX-2000WG+ and PC



(2) Reset SX-2000WG+ as shown below



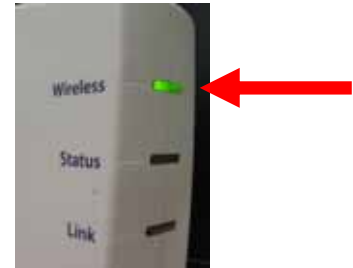
(c) Hold pressing the button until the LED turns red, then release the button

(3) And then, make sure the bottom LED is solid green.



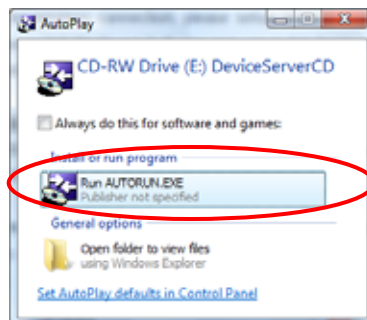
**If the LED shows wireless**

If the LED is blinking green (wireless connection) as shown below, follow (a)-(c) in the section 3(2).

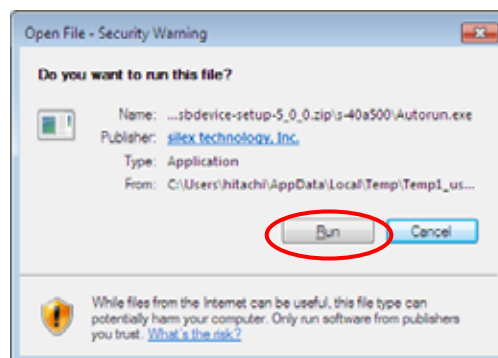


If still not good, refer to Trouble shooting 7(1)

(4) Insert the CD-ROM bundled with SX-2000WG+ into the PC and select “Run AUTORUN.EXE”. If the menu is not displayed automatically, double-click on “Autorun” in the CD-ROM root.



(5) If the “Security Warning” window is shown, select “Run”. (This window may not be shown foreground.)

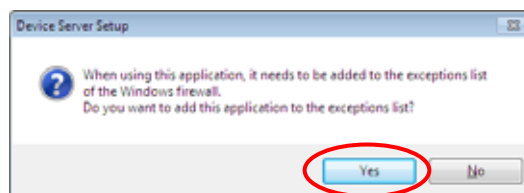


(6) Select "Device Server Setup".



(7) If the "User Account Control" window is shown, select "yes".

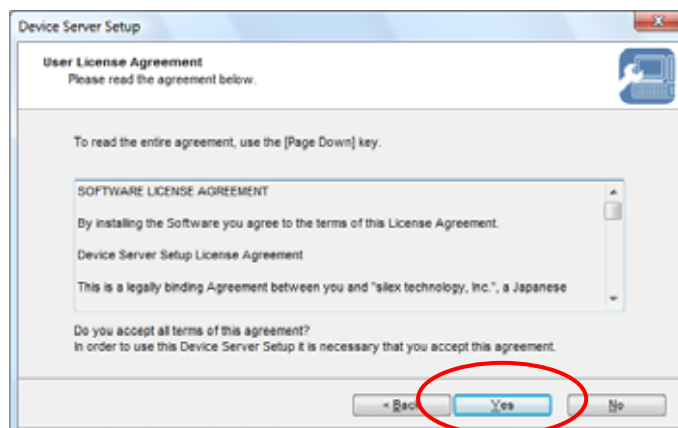
(8) Select "Yes".



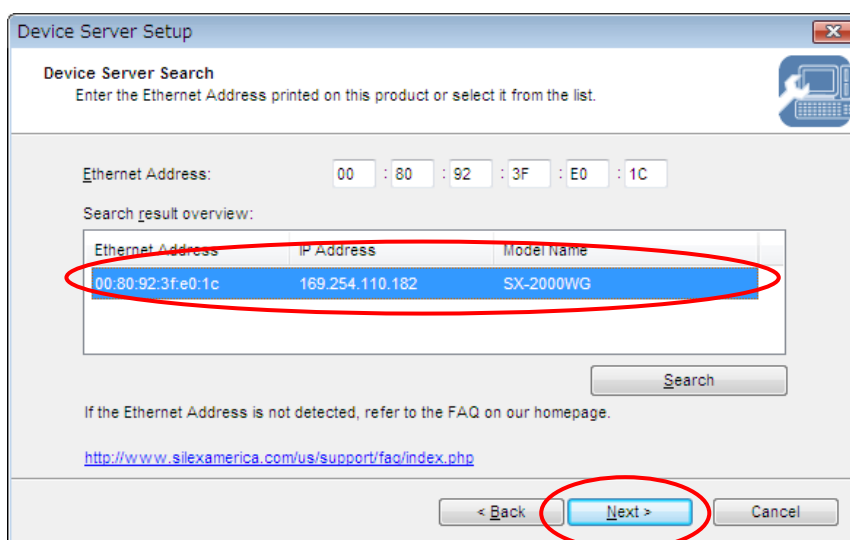
(9) Select "Next".



(10) Select “Yes”.



(11) After a while, SX-2000WG+ is listed in the window. Click on the entry required and select “Next”.

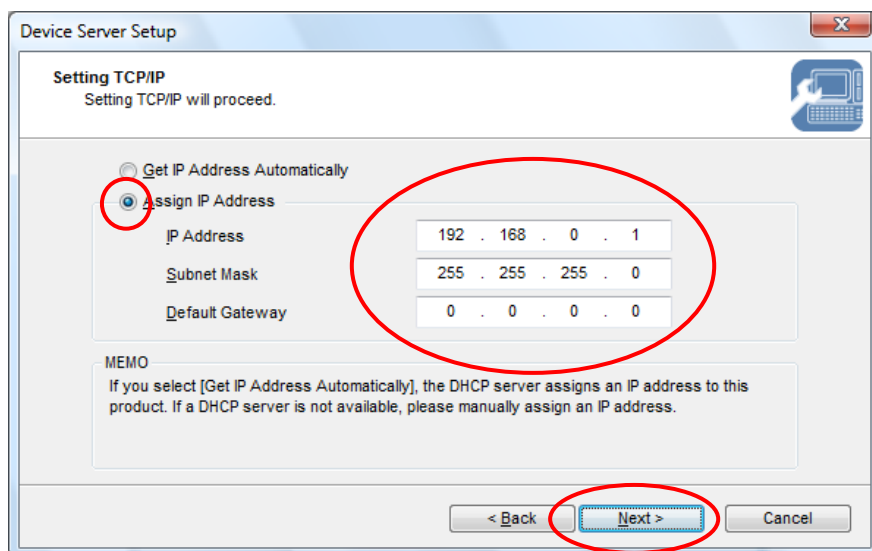


**If SX-2000WG+ is not listed**

- 1 . If SX-2000WG+ is still not listed in the window, click on the “Search” button and wait for 1 or 2 minutes.
- 2 . If still not listed, please disconnect and connect the network cable, and restart the device Server (Disconnect and connect the power cable). Please wait 2 minutes to configurate wireless connection.
- 3 . If still not listed, please go back to Step (a)-(c) in Section 3(2)

(12) Input the default parameters shown below and select “Next”.

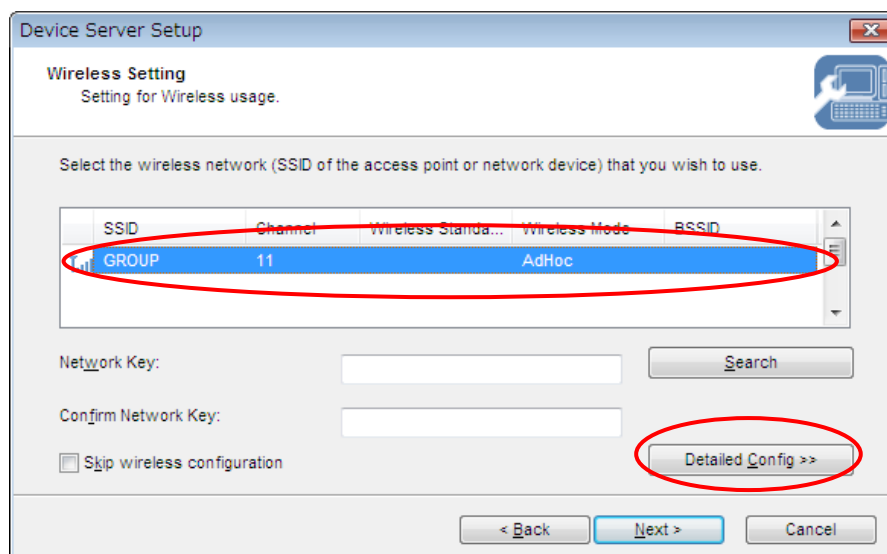
IP Address: 192.168.0.1  
Subnet Mask” 255.255.255.0  
Default Gateway” 0.0.0.0



#### IP Address to be used

If the same parameters are used for other network, use a different subnet address such as 192.168.1.1. If you are not sure, please ask the network administrator.

(13) Select “SSID:GROUP” “Channel:11” and select “Detailed Config”.





(14) Input the default parameters shown below and select “Next”.

**Device Server Setup**

**Wireless Setting**  
Setting for Wireless usage.

Wireless Mode: AdHoc

SSID: Room1

Channel: 11

Network Authentication: Open

Use WEP: OFF

Key Size: 64bit (16 hexadecimal)

WEP Key: [ ][ ][ ][ ][ ]

Key Index: 1

<< Easy Config

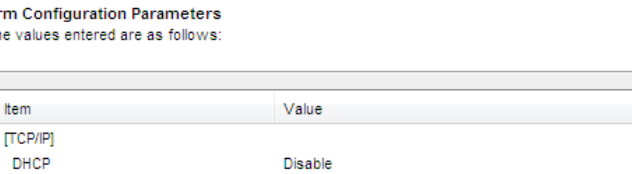
< Back Next > Cancel

Wireless Mode:	AdHoc
SSID:	Arbitrary ("Room1" for this manual)
Channel:	11
Network Authentication:	Open
Use WEP:	OFF

**SSID**

If you install multiple device servers in a close range, please assign unique SSID for each device server. For example, use the room name and so on.

(15) Select “Execute”.



**Device Server Setup**

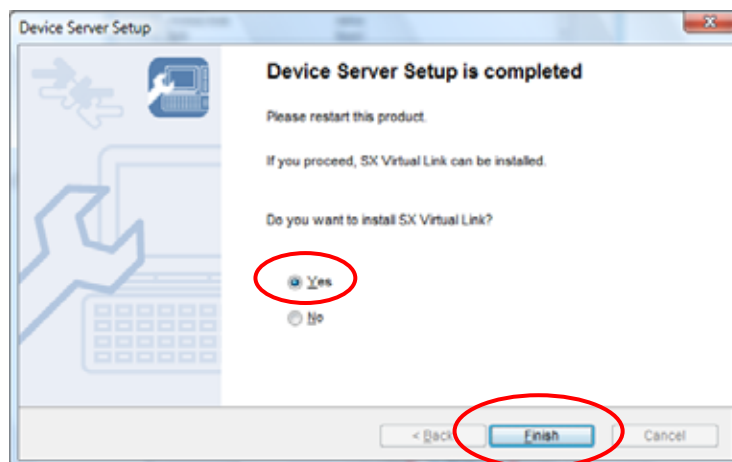
**Confirm Configuration Parameters**  
The values entered are as follows:

Item	Value
[TCP/IP]	
DHCP	Disable
IP Address	192.168.0.1
Subnet Mask	255.255.255.0
Default Gateway	0.0.0.0
[Wireless]	
Wireless Mode	AdHoc
SSID	Room1

Click [Execute] and the Settings will be sent.

< Back **Execute** Cancel

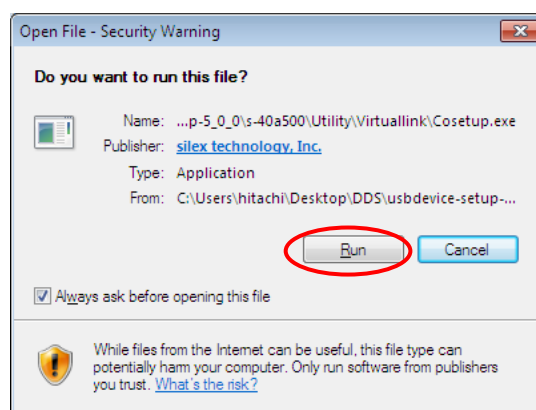
(16) Select “Yes” and select “Finish” and install SX Virtual Link.



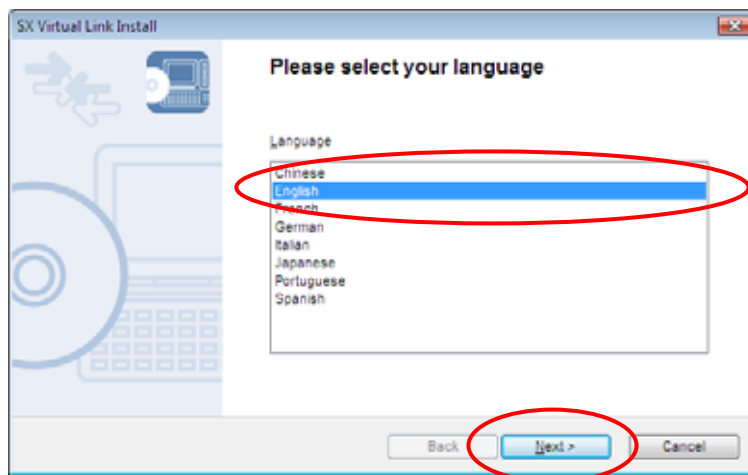
(17) If the “Security Warning” window is shown, select “Run”.

(In case that same window shown twice, select “Run” in either case.)

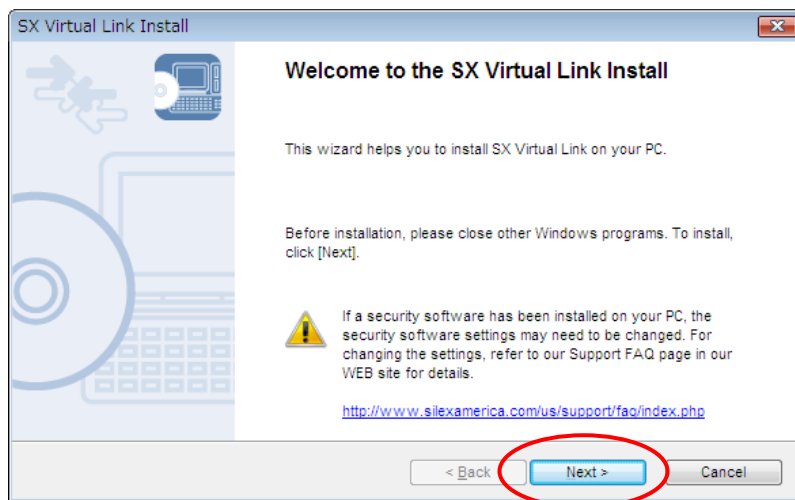
(This window may not be shown foreground)



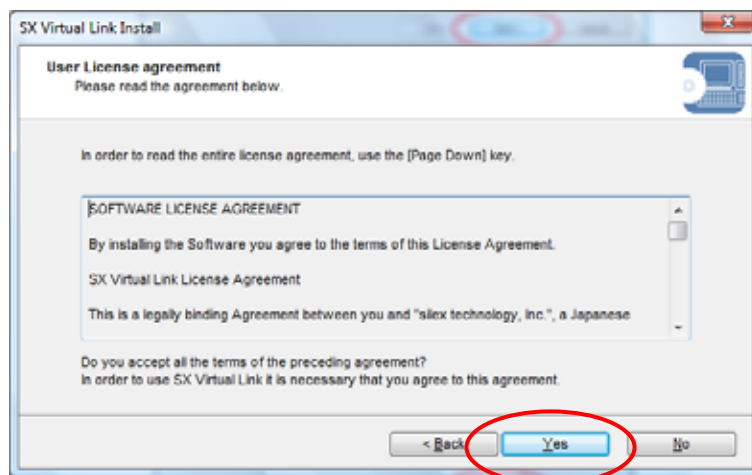
(18) Click on “English” and select “Next”. Skip to (19) if the window is not appear.



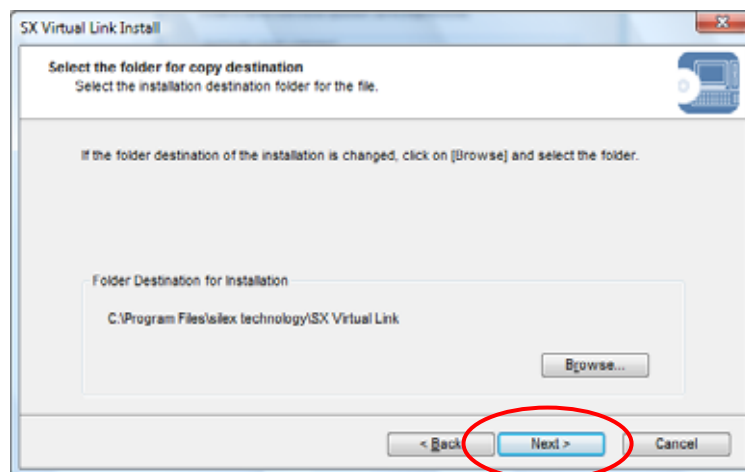
(19) Select "Next".



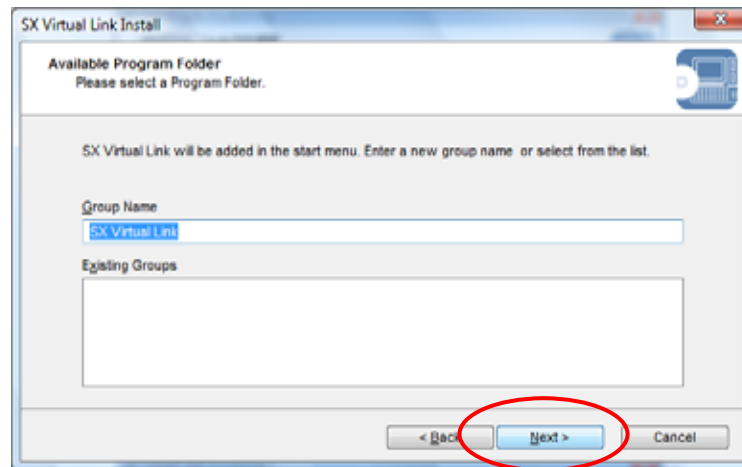
(20) Select "Yes".



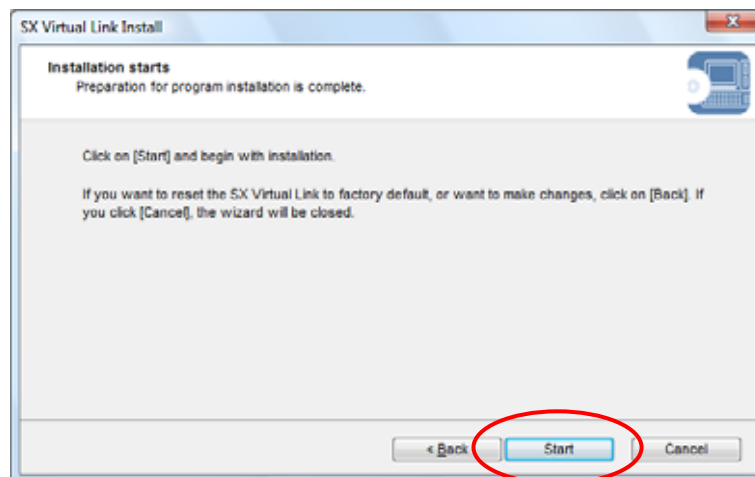
(21) Select "Next".



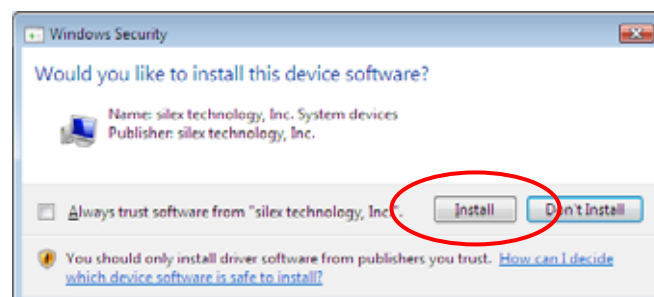
(22) Select “Next”.



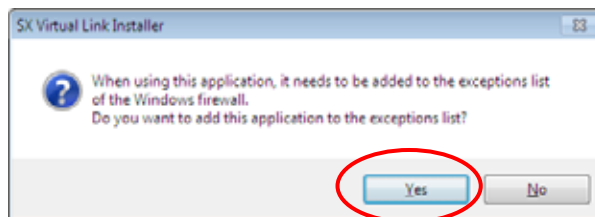
(23) Select “Start”.



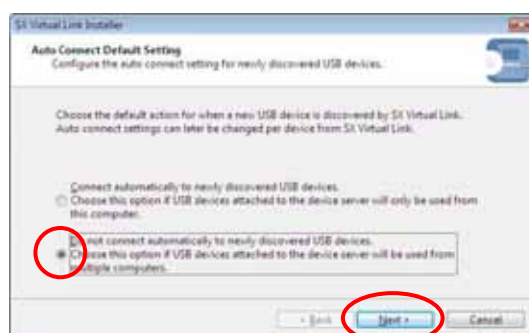
(24) Select “Install”. Installation is performed. (This window may not be shown foreground.)



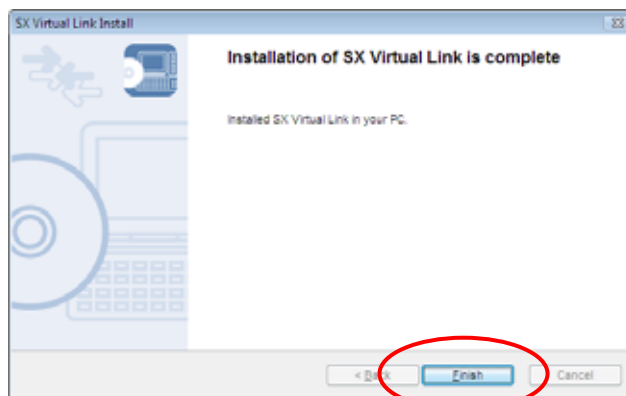
(25) Select "Yes".



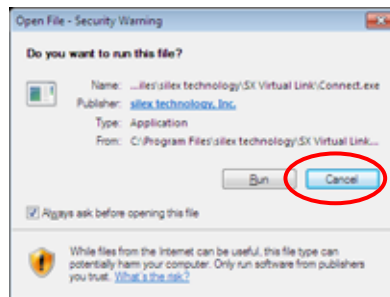
(26) Select "Do not ..... " and select "Next".



(27) Select "Finish" and finish the installation.



(28) Select “Cancel”. (This window may not be shown foreground.)



(29) Select “Quit”.

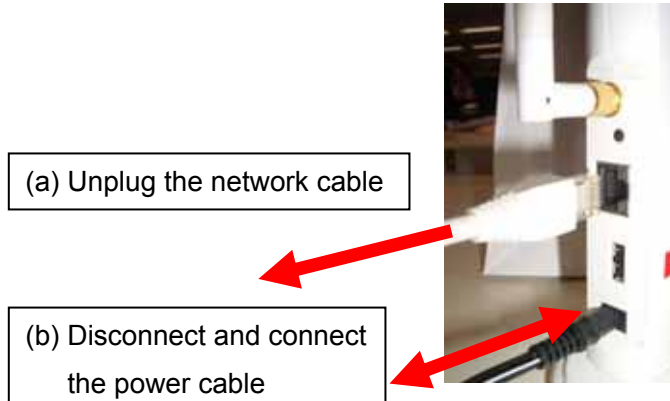


(30) Select “Yes”.

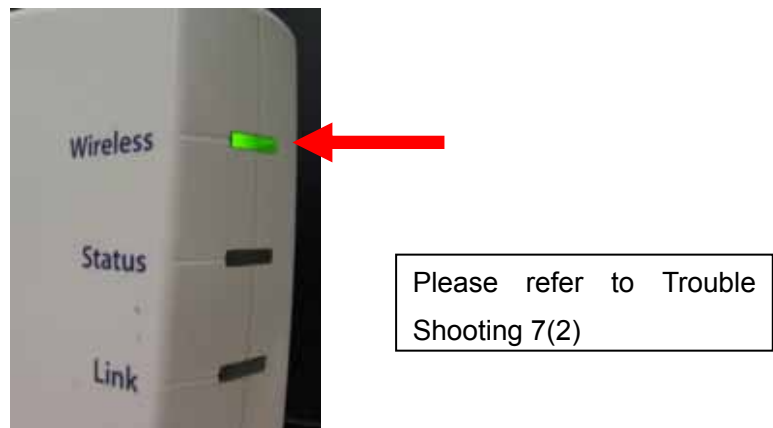


#### **4. Planex GW-US54Mini2W Detailed Setup**

- (1) Unplug the network cable from SX-2000WG+, and Restart SX-2000WG+ (disconnect and connect the power cable).

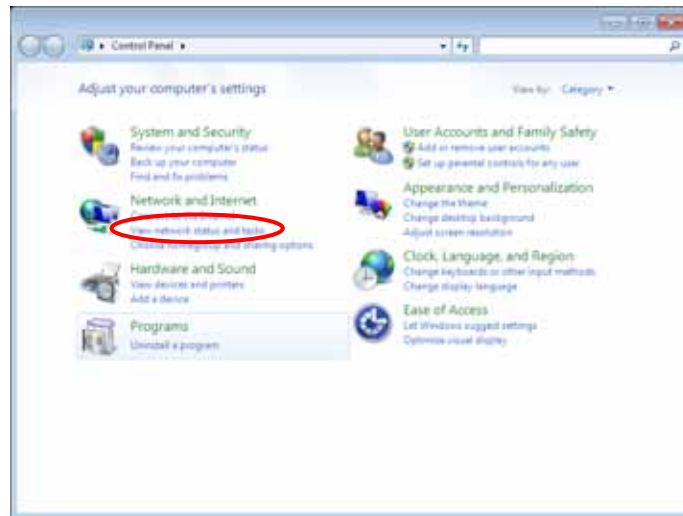


- (2) Please check if the top LED is blinking green.

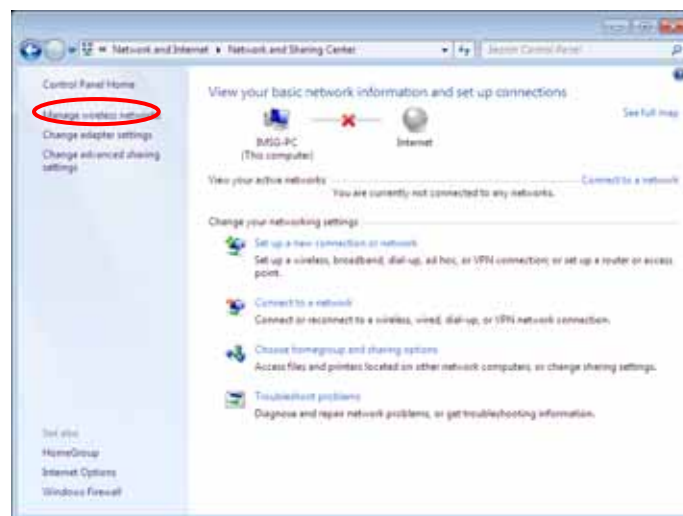


- (3) Plug GW-US54Mini2W into the PC.

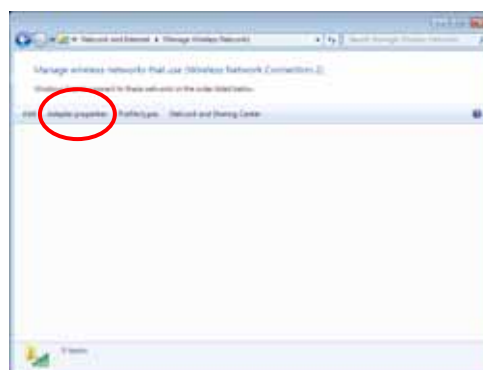
- (4) Run “Start” → “Control Panel”, and select “View network status and tasks”.  
 (“Network and Sharing Center”)



- (5) Select “Manage wireless networks”.

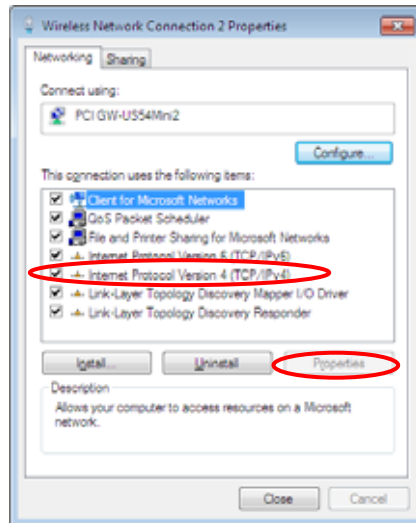


- (6) Select “Adapter properties”.



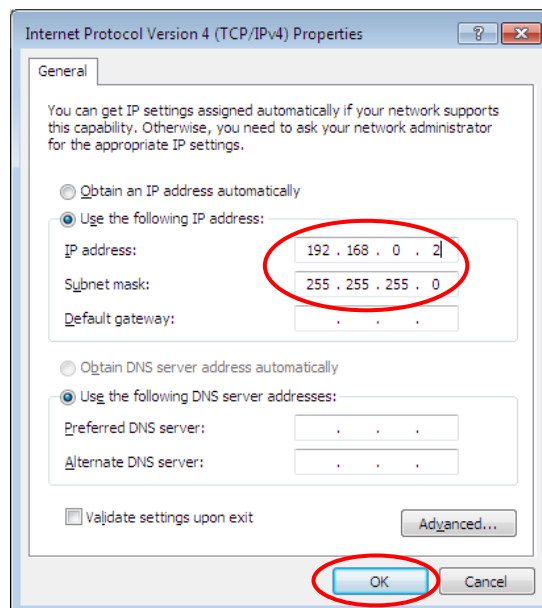


(7) Click on “Internet Protocol Version 4 (TCP/IPv4)” and select “Properties”.



(8) Input the following default parameters, and select “OK”.

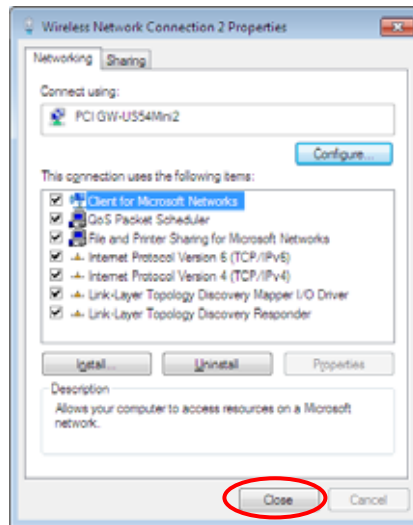
IP Address	192.168.0.2
Subnet Mask:	255.255.255.0
Default Gateway:	Blank



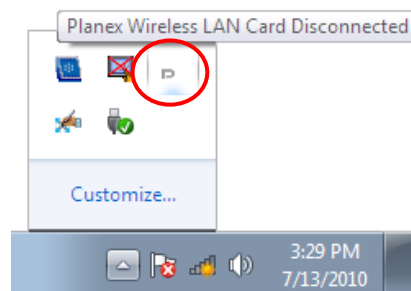
#### IP Address to be used

If you did not use the default parameters for SX-2000WG+, please use the relevant parameters. If you are not sure, please ask the network administrator.

(9) Select "Close".

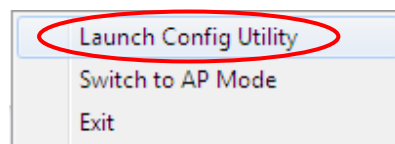


(10) Right click the Planex GW-US54Mini2W icon on the task tray.

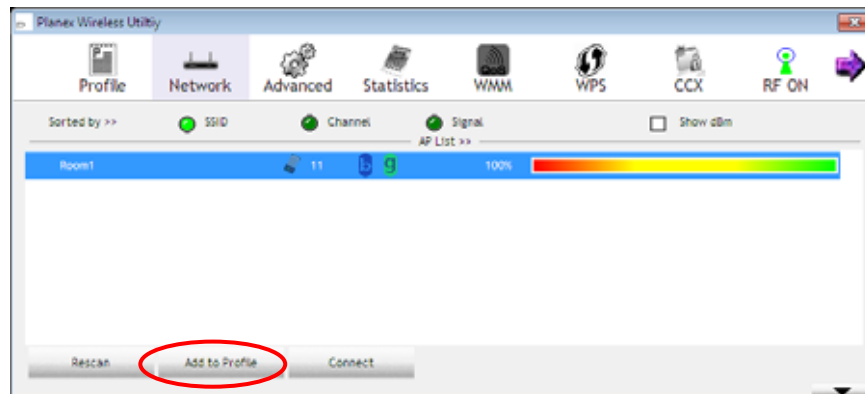


If window does not appear, run "Start"→"All Programs"→" Planex Wireless"→" Planex Wireless Utility".

(11) Select the "Launch Config Utility" on the right click menu.

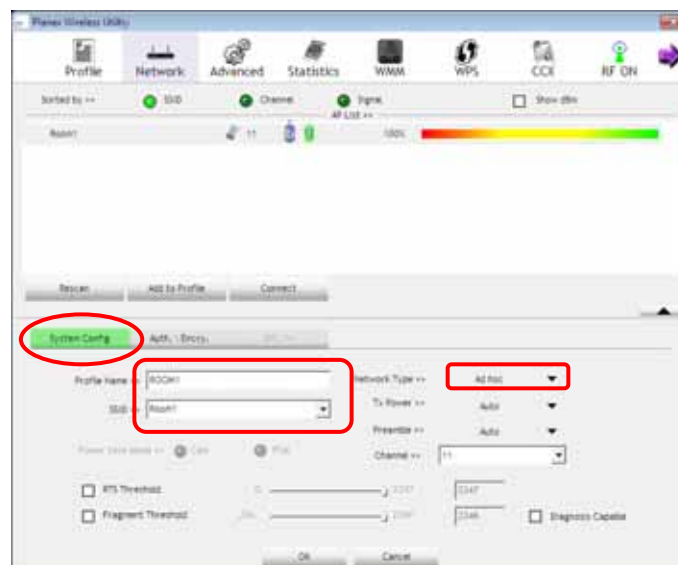


(12) Select “Room1”(SSID) and select “Add to Profile”.



If you cannot find the entry, select “Rescan” or reboot SX-2000WG+.

(13) Select “System Config” and input the default parameters.

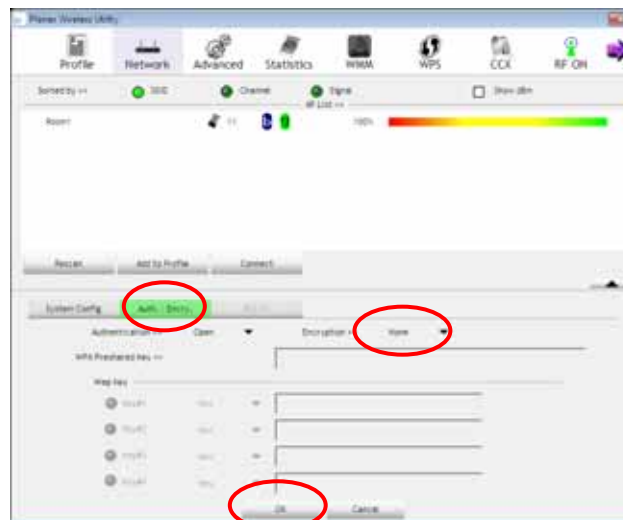


Profile Name: ROOM1

SSID: Room1

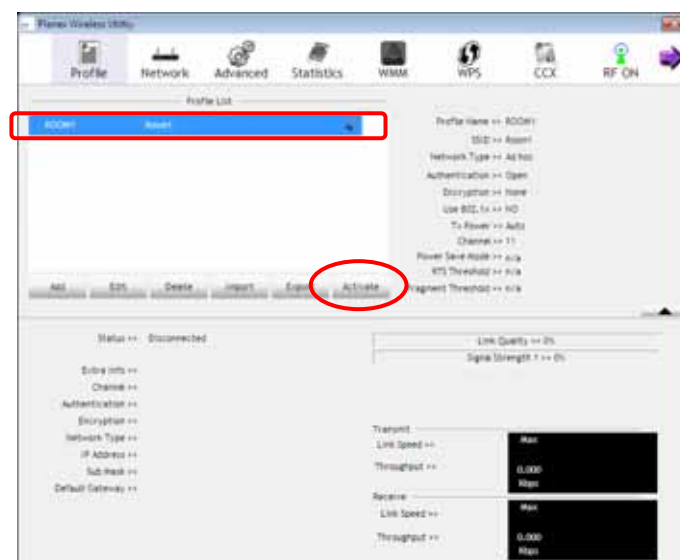
Network Type: Adhoc

- (14) Select “Auth. \ Encry.” and input the default parameters shown below and select “OK”.



Encryption: NONE

- (15) Select “ROOM1”(SSID) and select “Activate”.



## 5. FX/FX-DUO Setup

- (1) Connect FX/FX-DUO to the USB port of SX-2000WG+.

### Device Connection to SX-2000WG+

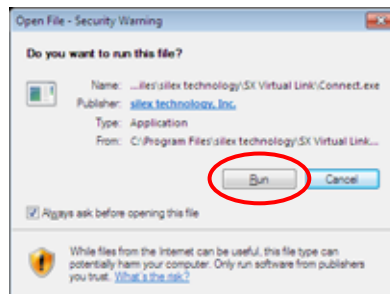
If FX/FX-DUO is connected to SX-2000WG+, please do not use a USB hub. Connecting multiple USB devices is not supported if FX/FX-DUO is connected.

- (2) Run “Start” → “All Programs” → “SX Virtual Link” → “SX Virtual Link”.

If window does not appear, click the icon below in the task tray.



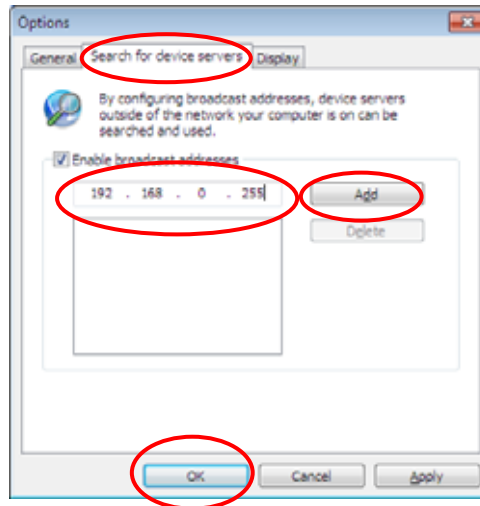
- (31) Select “Run”. (This window may not be shown foreground.)



- (3) Click button below.



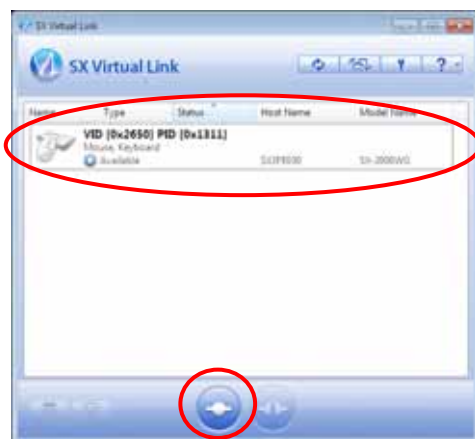
- (4) Click on “Search for device servers” and input “192.168.0.255” and select “Add” as shown below and select “OK”.



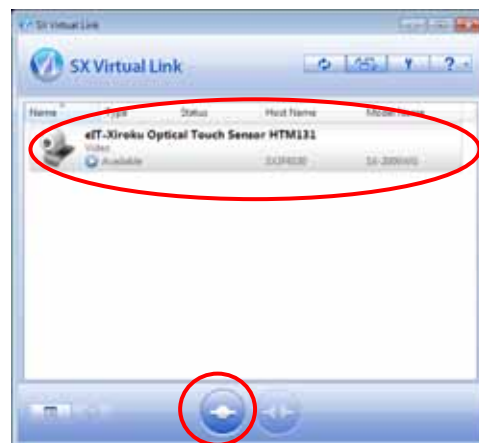
#### Broadcast Address to be used

If you did not use the default parameters for SX-2000WG+, please use the relevant broadcast address. If you are not sure, please ask the network administrator.

- (5) Click on the USB device entry listed in the window and select button below.



FX



FX-DUO

#### SX-2000WG+ is not listed

If SX-2000WG+ is not listed in the window, please refer to Trouble Shooting 7(2) to make sure the device server is working and the connection is established. If the ping command does not work properly, please check the settings of SX-2000WG+ and GW-US54Mini2W.

(6) Window shown below appears while connecting.



FX



FX-DUO

(7) Run "Start" → "All Programs" → "StarBoard Software" → "StarBoard Software". You can see if FX/FX-DUO-DUO is connected by the task tray icon.

FX



not connected



connected

FX-DUO



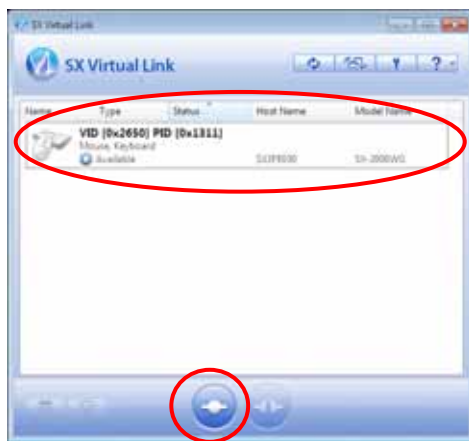
not connected



connected

## 6. How to reconnect

- (1) Run “Start” → “All Programs” → “SX Virtual Link” → “SX Virtual Link”.
- (2) Click on the USB device entry listed in the window and select button below.



FX



FX-DUO

- (3) You can see if FX/FX-DUO is connected by the task tray icon.

FX



not connected



connected

FX-DUO



not connected



connected



## **7. Trouble Shooting**

### **(1) SX-2000WG+ is not displayed for initial settings (wired connection)**

#### **(a) Check the LED**

If SX-2000WG+ is working with the wired mode, the bottom LED is solid green.



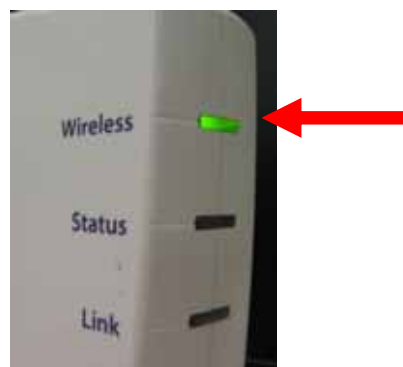
If not, please check if the hub and the cable are not faulty, and make sure the connection and restart SX-2000WG+ (disconnect and connect the power cable). If the LED is not still solid green, the unit might be faulty and contact the support for SX-2000WG+.

### **(2) Connection not established (wireless connection)**

#### **(a) Check the LED**

If the settings for wireless connection are configured properly, the LED is flashing green.

If not, please disconnect the network cable and restart the SX-2000WG+ (disconnect and connect the power cable).



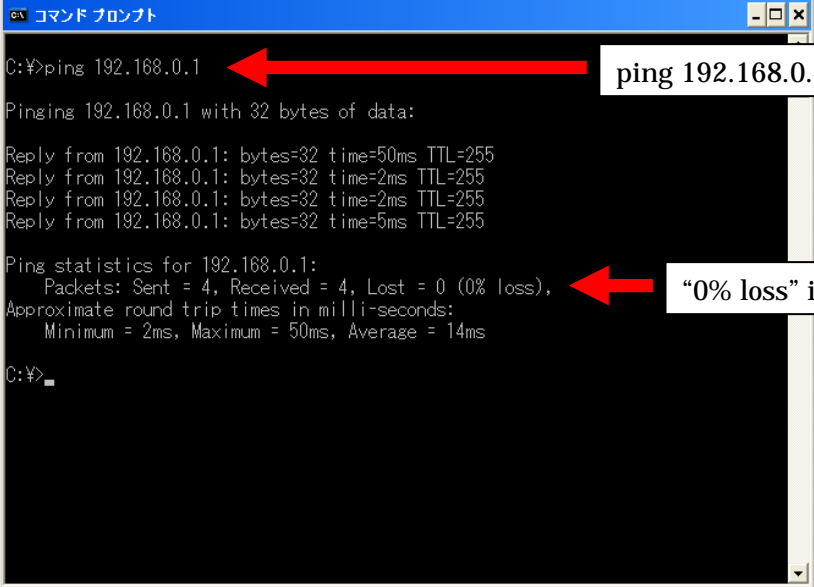
If not, please disconnect the network cable and restart the SX-2000WG+ (disconnect and connect the power cable).

If the LED is not still blinking green, please go back to Section 3 and set up again.

If still not, the unit might be faulty and contact the support for SX-2000WG+. Please refer to “Device Server Setup CD” for support center information.

(b) ping command

Run “Start” → “All Programs” → “Accessories” → “Command Prompt” and input “ping 192.168.0.1 ( IP address for SX-2000WG+) and press enter key.



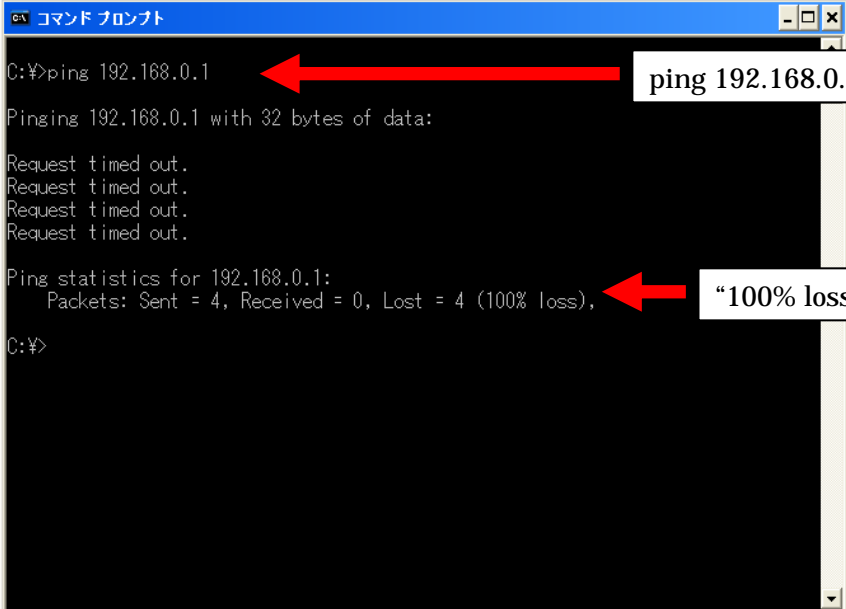
The screenshot shows a Windows Command Prompt window titled "コマンド プロンプト". The command entered is "ping 192.168.0.1", indicated by a red arrow and a callout box. The output shows four successful replies from 192.168.0.1 with varying times (50ms, 2ms, 2ms, 5ms) and a ping statistics summary showing 0% loss. A second red arrow points to the "0% loss" text with a callout box stating "0% loss" is displayed.

```
C:\¥>ping 192.168.0.1
Pinging 192.168.0.1 with 32 bytes of data:
Reply from 192.168.0.1: bytes=32 time=50ms TTL=255
Reply from 192.168.0.1: bytes=32 time=2ms TTL=255
Reply from 192.168.0.1: bytes=32 time=2ms TTL=255
Reply from 192.168.0.1: bytes=32 time=5ms TTL=255

Ping statistics for 192.168.0.1:
    Packets: Sent = 4, Received = 4, Lost = 0 (0% loss),
    Approximate round trip times in milli-seconds:
        Minimum = 2ms, Maximum = 50ms, Average = 14ms

C:\¥>
```

Network Connection Established



The screenshot shows a Windows Command Prompt window titled "コマンド プロンプト". The command entered is "ping 192.168.0.1", indicated by a red arrow and a callout box. The output shows four "Request timed out." messages and a ping statistics summary showing 100% loss. A second red arrow points to the "100% loss" text with a callout box stating "100% loss" is displayed.

```
C:\¥>ping 192.168.0.1
Pinging 192.168.0.1 with 32 bytes of data:
Request timed out.
Request timed out.
Request timed out.
Request timed out.

Ping statistics for 192.168.0.1:
    Packets: Sent = 4, Received = 0, Lost = 4 (100% loss),

C:\¥>
```

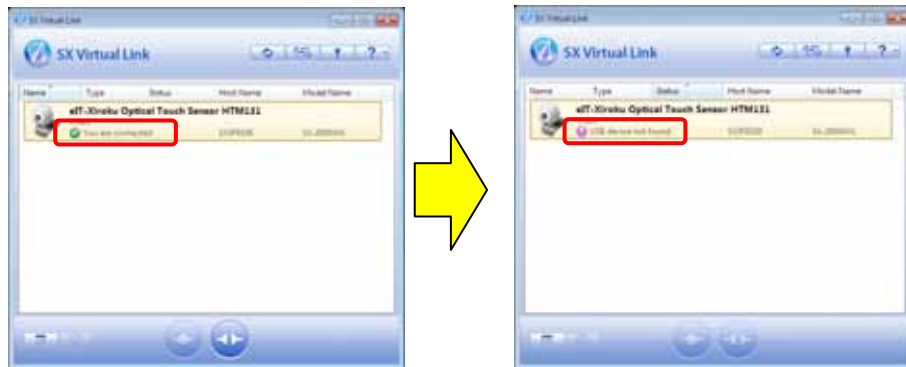
Network Connection Not Established.

After trying all the trouble shooting, please contact the support for SX-2000WG+.

### **(3) FX/FX-DUO can not work correctly**

If FX/FX-DUO can not work correctly, please try following recovery process.




- (a) Unplug USB cable from SX-2000WG+, then the USB device entry listed in the window will be disappeared after 30 seconds. (Status display changes “You are connected” → “USB device not found”).



- (b) Plug USB cable to SX-2000WG+ again, and it automatically connects.



- (c) You can see if FX/FX-DUO is connected by the task tray icon.

FX		
	not connected	connected
FX-DUO		
	not connected	connected

- (d) If still not have troubles, please restart the SX-2000WG+ (Disconnect and connect the power cable). Please wait 2 minutes to configurate wireless connection. Then follow to section 6 to reconnect.
- (e) If still not work correctly, reboot PC.

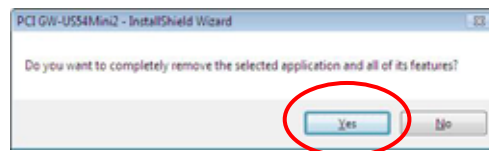
#### **(4) How to re-setup USB GW-US54Mini2W**

In order to re-setup GW-US54Mini2W, please uninstall the driver and install it again in accordance with following instruction.

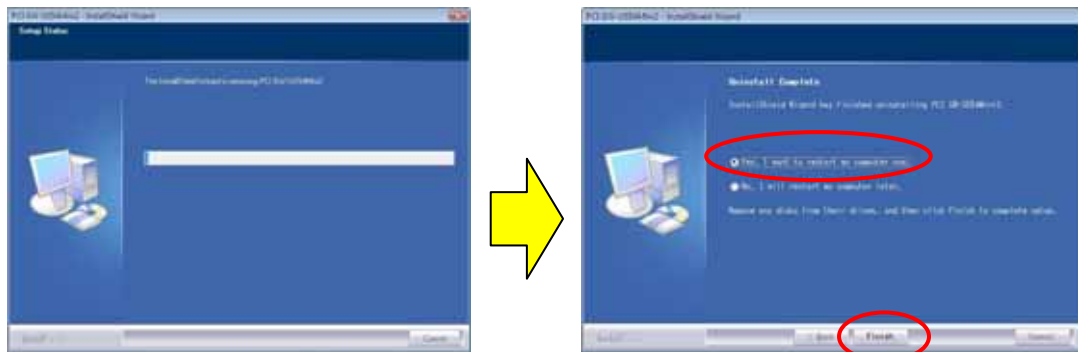
(a) Run “Start”→” Planex Wireless”→” Uninstall GW-US54Mini2W”.

(b) If the “User Account Control” window is shown, select “Yes”.

(c) Select “Yes”.



(d) Installation wizard window will be appeared, then select “”Yes, I want to ....” and “Finish”.



(e) Follow section 2 “GW-US54Mini2W Setup” to setup.

-end of file-