

Storage
Flagship®



HON
Smart now. Smarter later.

We raised the bar on storage. Now we're lowering it.

The HON Company has been a leader in providing high-quality storage solutions for more than 60 years. Our Flagship® line represents the very best of our accumulated experience and expertise. We are pleased to introduce the latest additions to this premium collection: Lower-height, lower-cost Storage Towers, End Towers and Desk Towers ... and expanded configuration options for our low-profile Personal File Centers.



Smooth Operator. A seamless top spans new 48½"-high Towers to create an unimpeded standing-height worksurface. Flagship Storage: "A" pulls and Champagne Metallic finish. 38000 Series Desking: Natural Maple laminate worksurfaces and Champagne Metallic finish. 7800 Series Seating: Alter Illustrate upholstery and Black finish.

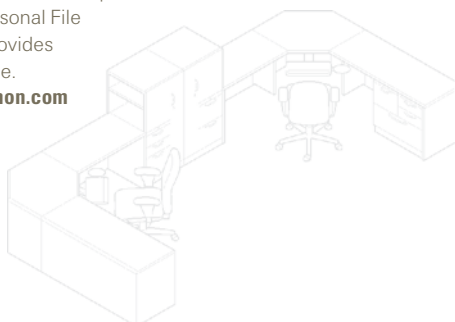
Details Online

For quick access to detailed specifications of the layouts in this brochure, enter the desired "Keyword" into the "Product Search" box at www.hon.com.

Keyword: **2Low**

Two End Towers with Bookcases help define office space; a Personal File Center in each station provides additional at-hand storage.

Enter Keyword **2Low** at hon.com





More Choice. Green Choice.

Personal File Centers are now available in a wider variety of configurations to store much more than just paper files. Like all Flagship products, they're made with recycled content and certified SCS Indoor Advantage™ Gold.



It's a Wrap. Personal Storage Towers and Personal File Centers are easily integrated into panel environments. Flagship Storage: "A" pulls and Platinum finish. Initiate® panels: Twigs Sycamore fabric. Worksurface: Whitestone laminate. Resolution® seating: Alter Ore upholstery with black finish.

Keyword: Lowride

A 48½"-high Personal Storage Tower is comfortably scaled for the seated-height privacy panels of this workstation.

Enter Keyword **Lowride** at hon.com

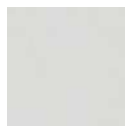




Finishing Touch.

In addition to the standard finishes below, Flagship products are available in 32 of the industry's most popular colors through the HON Color Correct™ program. Still can't find just the right hue? Ask us for a custom color!

Core Finishes



Light Gray



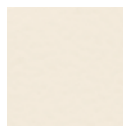
Putty



Taupe



Greige



Muslin



Charcoal



Carob

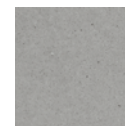


Black

Standard Metallic Finishes



Champagne



Platinum

HON®
Smart now. Smarter later.

The HON Company
200 Oak Street
Muscatine, IA 52761

800-833-3964
www.hon.com