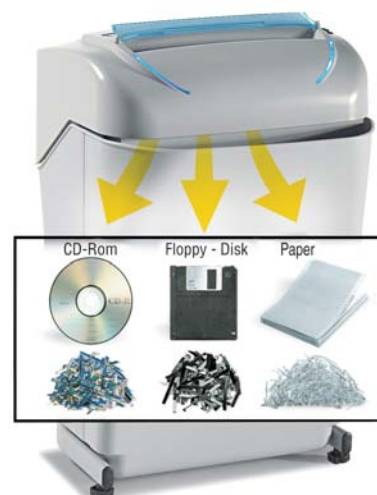


## Multipurpose and Multimedia "Energy Smart" shredder

### KOBRA 240 C4 TURBO

Throat width:	9,5 in.
Shred size:	1/8x11/8 in. <b>cross cut</b>
Sheet capacity:	17+30%
Security Level DIN 32757:	3
"ENERGY SMART" management system	yes
Speed:	7 ft./min.
Noise level:	61 dba
Credit cards:	1
CD-Roms:	1
Floppy-Disks:	1
Voltage:	115/60 V/Hz
Power:	3/4 Hp
Dimensions (WxDxH):	14,5x13x22 in.
Weight:	40 lbs.



Multipurpose and Multimedia cross cut shredder, equipped with "**TURBO BOOST**" system for **extra shredding capacity** and with "**ENERGY SMART**" system with optical illuminated indicators for **zero power consumption in Stand-by mode** and **environmental protection**.

- **24 hours continuous duty motor**
- Heavy duty chain drive with steel gears "**SUPER POTENTIAL POWER UNIT**"
- Automatic Start/Stop through electronic eyes with stand-by function
- Automatic Stop when waste bin is out with light signal
- Does not require plastic bags
- Carbon hardened cutting knives take staples and paper clips
- Convenient 9,5 gallon removable waste bin equipped with a special mechanism to **separate shredded paper from plastic shreds** of credit cards, CD-Roms and Floppy-Disks
- Motor thermal protection
- Accessories: plastic waste bags (50 pcs./box) code SB-5, oil (a 7 Oz oil bottle) code n. SO-1032



"**TURBO BOOST**" system:  
by pressing the Turbo switch the shredding capacity of the machine is increased to destroy up to **22 sheets** in one pass



**Removable waste bin** with a special mechanism to **separate shredded paper from plastic shreds** of credit cards, CD-Roms and Floppy-Disks



"**ENERGY SMART**"  
Management system for **zero power consumption in Stand-by mode**