

CS-3040/2540 Specifications

Basic Specifications:

Configuration:	Workgroup Multifunctional with Standard Copy and Optional Print and Optional Fax. Standard 500 x 2 Paper Drawers Plus 200 Sheet Multi-Purpose Tray. Standard Duplex. Optional Document Processor. Optional Finishing and Paper Handling.
Resolution:	600 x 600 dpi / 256 Levels, Fast 1200 Print Mode
Copier Memory:	Standard 64MB RAM, Upgradeable to 192MB
Magnification:	Full Size, 5 Reduction, 5 Enlargement Preset Ratios, Plus 25-400% Zoom
Electrical Requirements:	120V, 60Hz, 11.2A
Dimensions:	22.4"W x 25.2"D x 30.2"H
Weight:	166 lbs
Max Monthly Volume:	CS-3040: 100,000 Pages / CS-2540: 80,000 Pages

Output Speeds:

Warm-Up Time:	Within 15 Seconds, Program During Warm-up, Auto Start
First Copy Out / First Print Out:	4.7 Seconds
Pages Per Minute:	CS-3040: 30 Letter, 15 Legal, 15 Ledger CS-2540: 25 Letter, 12.5 Legal, 12.5 Ledger

Paper Supply:

Standard Paper Sources:	Dual 500 Sheet Drawers, 200 Sheet MPT, Auto Tray Selection / Switching, Add Paper While Running
Drawer Paper Size:	5.5" x 8.5" – 11" x 17"
MPT Paper Size:	5.5" x 8.5" – 11" x 17"
Std / Max Paper Capacity:	1,200 / 2,200
Paper Weight:	16 – 28 lb Bond via Paper Drawers, 16 lb Bond – 110 lb Index via MPT
Input Materials:	Bond Paper, Recycled Paper, Transparencies, Labels, Envelopes

Duplex Unit:

Duplex Type:	Standard Embedded Stackless
Paper Size:	5.5" x 8.5" – 11" x 17"
Paper Weight:	17 – 21 lb Bond
Duplex Modes:	Standard 1:2, 2:2, Book: 2, 2:1

Copy Functions:

Control Panel:	Touch Screen Interface
Imaging Modes:	Text, Photo, Text / Photo, Auto, Manual, ECO
Continuous Copy:	Up to 999, Auto Reset to 1
Additional Features:	Auto Magnification and Paper Select, Interrupt Copy, Repeat Copy, Scan Once Print Many, Electronic Sort, Rotate Sort, 2 in 1, 4 in 1, Border Erase, Margin Shift, Continuous Scan, Eco Mode

Paper Handling Options:

Document Processor: DP-670

Type:	Reversing Automatic Document Processor (RADF)
Acceptable Originals:	5.5" x 8.5" – 11" x 17", Mixed Size Processing
Capacity:	75 Sheet RADF / up to 30 Letter Size Originals Per Minute
Paper Weight:	13 – 42 lb Bond
Dimensions / Weight:	22.1"W x 19.2"D x 5.0"H / 15.4 lbs

Finisher: DF-730

Stack Capacity:	1,000 Sheets
Paper Size:	8.5" x 11" – 11" x 17"
Paper Weight:	16 – 28 lb Bond
Staple Capacity:	30 Sheets: 8.5" x 11"; 20 Sheets: 8.5" x 14", 11" x 17"
Edge Staple Position:	Single Position
Dimensions / Weight:	21.9"W x 20.7"D x 36.0"H / 55 lbs

Internal Finisher: DF-670

Stack Capacity:	500 Sheets
Paper Size:	8.5" x 11" – 11" x 17"
Paper Weight:	16 – 28 lb Bond
Staple Capacity:	30 Sheets: 8.5" x 11"; 20 Sheets: 8.5" x 14", 11" x 17"
Edge Staple Position:	Single Position
Dimensions / Weight:	12.8"W x 17.8"D x 6.5"H / 17.7 lb

Dual Paper Drawers: PF-670

Paper Capacity:	500 x 2 Sheets
Paper Weight:	16 – 28 lb Bond
Paper Size:	5.5" x 8.5" – 11" x 17"
Dimensions / Weight:	22.4"W x 24.2"D x 12.2"H/ 55.2 lbs

Connectivity:

Optional Network Print: PRINT SYSTEM (Y)

Controller:	Embedded PowerPC750/ 400 MHz Controller
Printer Memory:	Standard 64MB, Upgradeable to 576MB, Optional HDD, Standard CF Card Slot (Type 1)
Supported PDL/Emulations:	PRESCRIBE, PCL6 (PCL XL,PCL 5e), KPDL3 (PS3), KCGL (HP-GL/2), Diablo 630, IBM ProPrinter X24, Epson LQ850, Line Printer
Fonts:	80 Outline Fonts for PCL XL/5e, 136 Outline Fonts for KPDL3, 1 Bitmap Font
Windows® OS Compatibility:	Windows® 95/98/Me/NT4.x/2000/XP/2003/Vista
Novell® OS Compatibility:	Novell NetWare® 3.x/4.x/5.x/6.x
Mac OS Compatibility:	OS 8.x/9.x/10.x
UNIX OS Compatibility:	Sun OS 4.1.x; Solaris 2.x; AIX, HP-UX (LPR)
Connectivity / Interface:	Standard 10/100BaseTX, High Speed USB 2.0
KUIO LV Expansion Slot (2):	IB-23 Secure NIC; Optional Printer HDD
Supported Protocols:	TCP/IP, IPX/SPX, AppleTalk, NetBEUI
Drivers:	KX Driver for Windows®, PPD for Mac, PPD for Linux/UNIX, Certified Uni Driver, Windows® 64-bit Drivers, Generic Print Driver for Windows 9x/Me/NT4.x
Utilities:	KMnet Admin, KM-NET Viewer, KM-NET for Accounting, PDF Direct Print
Web Interface:	Kyocera Command Center

Optional Fax: FAX SYSTEM (P)

Compatibility:	Super G3
Quick Scan Speed:	1.2 SPP
Transmission Speed:	Approximately 3 Seconds per page
Modem Speed:	33.6 Kbps with Auto Fallback
Data Compression:	JBIG, MMR, MR, MH
Fax Memory:	Standard 4MB / Maximum 32MB
Additional Fax Features:	Duplex TX/RX, Confidential RX/TX, F-Code RX/TX, Broadcasting

Additional Options:

Job Separator (JS-670); Attachment Kit (AK-670); 32MB Fax Memory; 128MB Copier Memory; 512MB Printer Memory; Stand



The
Productivity
Star



CS-3040/2540

Document
Imaging
Solutions



Specifications and design are subject to change without notice.
For the latest on connectivity visit www.copystar.com
All trademarks are the property of their respective owners.

Kyocera Mita America, Inc. Headquarters:
225 Sand Road, PO Box 40008, Fairfield, NJ 07004-0008, USA
©2007 Kyocera Mita America, Inc.
IC# 855D400111



www.copystar.com

CS-3040/2540



An Affordable Document Imaging System That Handles the Daily Demands of Your Business

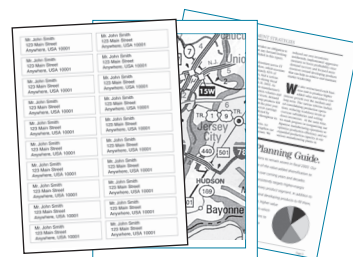
Businesses of all sizes will appreciate the durability and reliability of the CS-3040 and CS-2540. Combining robust copy capabilities with the option to add network printing and faxing, they offer the ability to tailor document imaging to your specific needs.

Copy

Robust Copy Capabilities for Solid Office Productivity

The CS-3040 and CS-2540 deliver all the copy features and functionality your workgroup demands. 600 x 600 dpi and 256 levels of grayscale ensure crisp, clean output at fast speeds up to 30 pages per minute. A standard copier memory of 64MB RAM is upgradeable to 192MB for your demanding output, while a complete array of functions such as zoom, auto centering, mirror image and more help simplify your document imaging needs and enhance your overall office productivity.

A maximum paper capacity of up to 2,200 sheets, and standard duplexing ensure the CS-3040 and CS-2540 will keep up with the performance demands of your workgroup. Finishing options bring added flexibility, including the ability to handle mixed paper sizes in the same job. With our Touch Screen Interface you can easily find the features you require for creating professional-looking documents every time.



Output Versatility

The CS-3040 and CS-2540 deliver crisp, clean imaging on an assortment of paper weights, types and sizes for maximum flexibility.



Exceptional Paper Handling

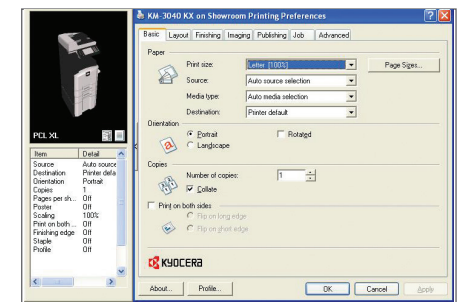
A 2,200-sheet maximum capacity enables users to switch paper sizes and types at the touch of a button from the device or from the desktop with optional network printing.

Exceptional Network Printing When and How You Need It

Connected as a network printer, the CS-3040 and CS-2540 maximize your document options. High quality 600 x 600 dpi output, full printing capabilities, and optional finishing functions are all easily accessible from the desktop. Both devices include a powerful 400 MHz processor combined with 64MB RAM, which is upgradeable to 576MB. Print Solutions such as PDF Direct Print provide your workgroup with innovative technology designed to boost productivity. The ability to easily print PDF files directly from the desktop, without the need to open an application is an immense time saver for busy workgroups.

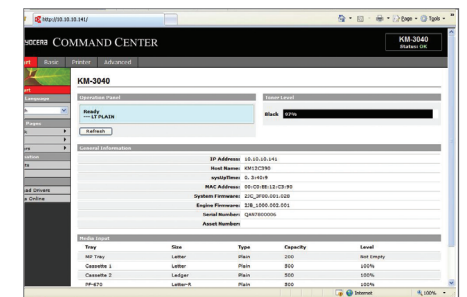
The network print capabilities of the CS-3040 and CS-2540 are supported by an impressive array of tools to bring efficiency and control to the active printing environment you see throughout your organization. Our unique KX Driver is designed to improve print performance, and at the click of a mouse you can easily specify the number of sets needed to print, required paper handling, duplex, and stapling for document output.

The KM-NET suite of software enhances the management process by providing administrators with the necessary tools for accounting, trouble-shooting, and monitoring networked devices from a central location, in a secure environment. Our PRESCRIBE solution brings added flexibility to the CS-3040 and CS-2540, allowing companies to create and manage their critical business forms and letter-head, as well as store them directly at the device to print on demand. This powerful solution allows businesses to eliminate pre-printed forms, with the added benefit of reducing overhead costs and freeing up financial resources.



KX Driver

With a common user interface on Copystar MFPs and Kyocera Printers, the KX Driver allows total control over all features while simplifying both set-up and use.



Kyocera Command Center

This intuitive web-based portal makes it easy for administrators to manage devices. Set security levels, protocols, filters and device defaults with one easy to navigate interface.

Optional Fax

Add Functionality and Convenience to Your Document Imaging Device

Super G3 33.6 Kbps optional faxing brings a convenient multifunctional dimension to the CS-3040 and CS-2540, eliminating the need for a standalone fax machine. Fax directly from the device and take advantage of all standard fax capabilities, at speeds of 3 seconds per page.



Copystar empowers companies with uncompromising products and software to meet their document needs. When it comes to solid copier capabilities and network printing flexibility, the versatile, reliable CS-3040 and CS-2540 are a smart, economical choice for any business.