

SHARP®

WORKGROUP COLOR DOCUMENT SYSTEMS

POWERFUL PERFORMANCE. UNCOMPROMISING QUALITY. TRUE MULTI-TASKING.



MX-3500N
MX-3501N
MX-4501N



"Line of the Year"
Award
2007



"Most Secure MFP"
Award
2007



"Color Line of the
Year" Award
2006



Awarded to
MX-3501N/4501N
2006



"Outstanding MFP
Security Solution"
2006



THE RENAISSANCE OF COLOR

MX-3500N/MX-3501N/MX-4501N

THE PERFORMANCE AND RELIABILITY YOU EXPECT—WITH THE ADDED VALUE OF BRILLIANT COLOR

Sharp's MX-3500N, MX-3501N and MX-4501N workgroup color multifunction document systems redefine the standard for productivity. With uncompromising quality and outstanding reliability, these new color document systems deliver virtually all the functionality today's growing businesses need, along with the added benefits of high-quality, cost-effective color. Best-in-class multifunction features allow you to work smarter and faster than ever. These versatile, scalable systems can easily copy, print, scan, fax, e-mail or store your files with great efficiency. But that's only the beginning. The MX Color Series also offers Sharp's newest innovation, **Sharp OSA™ development platform**. Designed to boost productivity, the Sharp OSA platform gives you one-touch access to your business applications right from the LCD display, offering a new realm of control and convenience. Our advanced web-based management and easy-to-use tools make monitoring and containing costs virtually effortless, so keeping an eye on the bottom line is never an issue. And for unparalleled security, Sharp's MX Color Series can help protect your data by securing walk-up, scan and network access. With several layers of device protection, Sharp can help keep your business ahead of regulatory compliance.





RAISING THE BAR FOR MULTI-TASKING AND PRODUCTIVITY

Innovative

Efficient

Secure

Scalable

Full Color

- Robust 800 MHz **multi-tasking color** document system with copy, print and network scanning standard
- Versatile application integration with **Sharp OSA technology** enables users to access network applications right from the LCD panel
- **Customizable**, easy-to-navigate touch-screen display
- Sharp's award winning **multi-level document and network security**
- Standard 150-sheet duplex single pass document feeder with **Color Scan²™** is available with the MX-3501N and MX-4501N
- Standard **hard disk** allows greater job queuing and document filing
- Large **5,600-sheet** maximum on-board paper supply (1,100 standard)
- One-touch **ImageSEND™** facilitates scans to USB devices, network folders, e-mail and more
- Space-saving **Inner Finisher** or **Saddle-stitch Finisher** and **hole-punch options**
- PCL®6/PCL5c compatible printing with **Direct Print** function
- Advanced **web-based device management** and on-board user manuals
- Integrated **LDAP and User Authentication** for secure scanning
- Efficient **Card Shot, Page Stamp** and **Tandem Copy**
- Environmentally focused; supports **ENERGY STAR®** and **RoHS**
- Optimized Fax option includes **PC Fax** and **Inbound Routing**
- **My Sharp™** web-based 24/7 training

ADVANCED FEATURES



OPTIMIZE PRODUCTIVITY WITH HIGH-PERFORMANCE FEATURES THAT GET THE JOB DONE

THE TOTAL PACKAGE

With impressive speeds at 35 ppm in both B&W and Color, the MX-3500N and MX-3501N can easily keep up with the demands of busy offices and workgroups. The faster MX-4501N delivers a speedy 45 ppm in B&W and 35 ppm in color. With an incredible **5,600-sheet maximum paper capacity** and productive **document finishing options**, these powerful performers can handle even the largest projects with ease. With trayless duplexing, electronic sorting and integrated offset stacking, the MX Color Series make organization and distribution practically effortless. Front-loading paper drawers and easy-to-change toner cartridges simplify maintenance. And if that's not enough, new **long-life consumables** and supplies minimize service calls, resulting in lower operating costs.



MX Color Series shown with Saddle-stitch Finisher, Hole Punch and Paper Desk options.

COLOR SCAN² TECHNOLOGY DELIVERS TWICE THE PRODUCTIVITY

Speed up your workflow with Sharp's innovative **Color Scan² technology**. A standard 150-sheet duplexing single pass document feeder (DSPF)* with simultaneous scanning of 2-sided documents allows the MX-3501N and MX-4501N to easily process large-scale projects with incredible efficiency. And since the document is scanned only once, productivity and reliability are significantly increased.



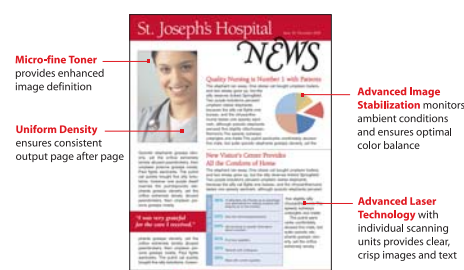
INNOVATIVE DOCUMENT FILING

For even more efficiency, the MX-3501N and MX-4501N offer convenient **Document Filing**. Businesses can now maintain consistency by standardizing and storing frequently used files such as fax cover sheets, distribution forms, and more. With **30 GB of storage capacity***, everyone can retrieve and share documents. Need to restrict access to select users? Not a problem. With private storage features, PIN-code access, and **My Folders**, you can easily store sensitive documents securely. And with Sharp's new **Quick Folders**, you can temporarily store and retrieve documents with fast, one-touch simplicity. Plus, an advanced backup system helps ensure that your files are safe and secure.

BEST-IN-CLASS IMAGE QUALITY

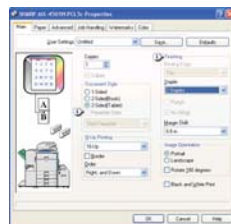
Sharpen your business communications with crisp, clear images and dazzling color. Create dynamic proposals and newsletters that get noticed and make a statement. Sharp's

micro-fine toner technology and **Image Stabilizing System** ensure color accuracy from the first page to the last, so your documents always look good.



OUT-OF-THE-BOX NETWORK PRINTING

With simple plug and play operation, the MX Color Series offer 600 x 600 dpi B&W and Color printing right from your desktop.



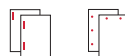
Time-saving features such as cover page printing, overlay print and pamphlet mode rival the results you'd get from quick printers. You can even save your preferences for fast recall. And with the optional Postscript® compatible driver, you get extensive color controls, as well as convenient PDF printing.

ADVANCED FINISHING FEATURES DELIVER PROFESSIONAL RESULTS

Easily save time and money by completing color jobs in-house. Presentations or newsletters once sent out for printing can easily be bound (three-position or hole-punched with the compact **Inner Finisher** or **Saddle-stitch Finisher** options). You can also create professionally finished color pamphlets and brochures with the Saddle-stitch Finisher.



Inner Finisher and Hole punch options



Saddle-stitch Finisher, Hole Punch and Paper Desk options



* MX-3500N: 100-sheet RSPF and 10 GB storage capacity

VERSATILE SCALABILITY

THE SHARP OSA PLATFORM CAN LEVERAGE YOUR INVESTMENT AS YOUR BUSINESS NEEDS EVOLVE.

The MX Color Series are enabled with Sharp's newest innovation—The **Sharp OSA Development Platform**. Designed to enhance the way you work, Sharp OSA technology delivers an entirely new realm of productivity by enabling users to access applications directly through the LCD display. With Sharp OSA technology, the MX-3500N, MX-3501N and MX-4501N become a gateway into your network, providing fast, flexible access no matter where you are in the office. Sharp OSA technology enables you to truly customize your document workflow and manage your files easily and efficiently. It's a completely new way of working that opens the door to increased efficiency. And since the Sharp OSA Development Platform utilizes industry-standard network protocols such as SOAP, XML, and XHTML, Sharp's partner program members can deliver customized solutions to your business faster than ever.

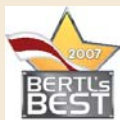


SHARP OSA TECHNOLOGY AT A GLANCE

- Automate tasks and save time with seamless integration between MFPs and network applications
- Centralized applications minimize set-up and installation on multiple MFPs
- Helps repetitive tasks and streamlines workflow, increasing efficiency
- Maximize your return on investment with tighter integration between your IT assets
- Industry standard programming results in faster deployment of new solutions



INDUSTRY-LEADING SECURITY HELPS PROTECT YOUR ASSETS



"Most Secure MFP"
Award



"Outstanding MFP
Security Solution"

To help secure your electronic documents, the MX Series document systems offer several layers of network and data security to protect valuable data. As the leader in office equipment security, Sharp enables IT professionals to safely deploy digital copying, printing, scanning and faxing in any business or government environment.



SECURE WALK-UP ACCESS

The MX Color Series utilize an advanced Account Management System, which enables administrators to setup authority groups for walk up users. Enabled either by account code or user authentication login, this easy-to-use system can lock out unauthorized walk-up users, as well as help your company control costs by restricting color output and other features.



SECURE THE OUTPUT

To help protect your printed documents from unauthorized viewing, the MX Color Series offer Confidential Printing, which requires users to enter a PIN code in order to print their queued document. Additionally, Secure Fax Release ensures received fax documents are held in memory until an authorized user enters a PIN code.



SECURE NETWORK SCANNING ACCESS

To help protect your network from unauthorized e-mail communications, the MX Color Series support user authentication, which requires users to login before performing any network scanning operations.



SECURE DEVICE ACCESS OVER THE NETWORK

To help restrict access to the device over the network, the MX Color Series offers Secure Socket Layer (SSL Encryption) IP/MAC address filtering, protocol enable/disable and port management for maximum security.



SECURE YOUR DATA

To help protect your data, the MX Color Series offer an optional data security kit, which encrypts document data using 128-bit encryption. Additionally, the data security kit erases the memory on the hard drive by overwriting the encrypted data up to seven times, offering an unprecedented level of assurance.



SECURE THE AUDIT TRAIL

Sharp offers hardware and software accessories that help you control, access, and track usage across your entire office equipment fleet.

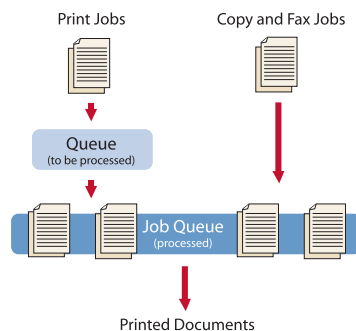
These scalable security offerings aim to protect your intellectual property, preserve confidential information and help your business to meet regulatory requirements, such as the Health Insurance Portability and accountability Act (HIPAA), and the Gramm Leach Bliley Act (GLB). For additional information visit:
www.sharppusa.com/security

STREAMLINE YOUR WORKFLOW WITH POWERFUL FEATURES

Whether you're an administrator or desktop user, the MX-3500N, MX-3501N and MX-4501N are incredibly easy to use. The intuitive, touch-screen display is easy to navigate, and provides instant access to powerful distribution features. You can even customize specific "keys" to store frequently used settings or to recall recurring jobs, so making adjustments is a snap. Plus, with separate copy buttons for B&W and color, users can easily select what they need.

DUAL JOB QUEUES FOR ADVANCED PRODUCTIVITY

The MX Color Series feature a powerful multi-tasking controller that ensures that copy, fax and print jobs output continuously for optimum efficiency. Whereas traditional controllers perform one function at a time, the MX Color Series can process incoming jobs even while existing jobs are output.



AWARD-WINNING NETWORK SCANNING

With Sharp's powerful ImageSEND technology, the MX-3500N, MX-3501N and MX-4501N become powerful distribution hubs that centralize document workflow, reduce overnight courier costs, and save time. Sophisticated network scanning enables you to send files to any of seven destinations: E-mail, Desktop, FTP, Network Folder (SMB), USB, Fax and i-Fax. The Send to Group mode allows you to mix group broadcasts to E-mail, Fax, and Internet Fax for increased efficiency.*



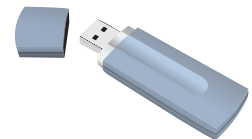
A larger, easy-to-read touch-screen display with customizable "keys" is just one of several enhancements to the operation panel. Separate buttons for B&W and Color make copying a snap.

SECURE SCANNING AT YOUR FINGERTIPS

The MX-3500N, MX-3501N and MX-4501N minimize the risk of unauthorized scanning with integrated **User Authentication**. The advanced controls allow you to configure the MX Color Series to require User Authentication via your company's LDAP server with up to three levels of identification. This protects sensitive documents from being scanned, faxed or e-mailed—so your data is never compromised.

CONVENIENT USB SUPPORT

For advanced portability and convenience, the MX-3500N, MX-3501N and MX-4501N have a USB port and support popular USB memory devices. Easily scan files directly to a USB device, or simply plug in and print directly without copying files back and forth. Sharp's MX-3500N, MX-3501N and MX-4501N support industry-standard file formats including TIFF, JPEG, PDF, and Encrypted PDF.*



POWERFUL SUPER G3 FAXING

With lightning-fast speed, the optional **Super G3 fax kit** delivers powerful fax capabilities. The ultra-efficient MX-3500N, MX-3501N and MX-4501N can staple and/or copy inbound faxes, so your documents are collated and ready to distribute. With efficient **Inbound Fax Routing**, faxes can be forwarded directly to your e-mail address. Authorized users can easily manage settings right from their PC through the user-friendly Home Page. And for additional savings, the optional **B&W Internet Fax expansion kit** can help reduce long-distance phone costs.



*Some destinations require optional equipment

DOCUMENT MANAGEMENT

INTEGRATED, EASY-TO-USE SOFTWARE PROVIDES COMPREHENSIVE DOCUMENT CONTROL

The feature-rich MX-3500N, MX-3501N and MX-4501N are sophisticated, yet exceptionally user friendly. To help you manage all of the versatile features of the MX-3500N, MX-3501N and MX-4501N, Sharp designed the **Administration Utility Suite**, a collection of **easy-to-use software** that simplifies installation and management. This broad suite of tools delivers all the control you need from walk-up user access to complex network management.

THE EMBEDDED WEB PAGE DELIVERS INSTANT DESKTOP ACCESS

Manage advanced features of the MX Color Series right from your desk with Sharp's easy-to-use Home Page. Set personalized scanning destinations, profiles, web-links, and fax distribution features. You'll also gain access to My Sharp, a customized website for on-demand training and support.



SEE THE WHOLE PICTURE WITH PRINTER ADMINISTRATION UTILITY

View devices on the network, install features and distribute drivers over the network—all from one single interface. Monitor device usage for both B&W and Color jobs, set printing priorities or move jobs to different devices to expedite workflow.

KNOW WHAT'S HAPPENING WITH PRINTER STATUS MONITOR

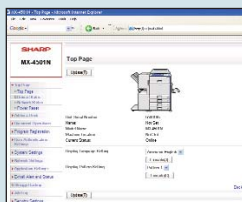
Designed for both managers and desktop users, Printer Status Monitor allows you to view printer conditions, check paper levels, toner, and more all through an easy-to-use interface.

INTEGRATE SCANNED FILES WITH SHARPDESK® SOFTWARE

With Sharpdesk® document management software, you can easily integrate scanned documents into your everyday workflow. Organize, edit, and convert—even combine several scanned files into one document. And with full text search capabilities, users can retrieve documents faster than ever.

REDUCE DOWNTIME WITH REMOTE E-MAIL DIAGNOSTICS

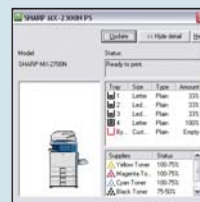
Now managers can stay on top of device productivity. Key operators can automatically receive meter reads and specific diagnostic information about the MX-3500N, MX-3501N and MX-4501N sent right to their desktop.



Embedded Web Page



Printer Administration Utility



Printer Status Monitor



Sharpdesk Software

MX-3500N/MX-3501N/MX-4501N SPECIFICATIONS

Main Specifications

| | |
|------------------------|--|
| Base Models | MX-3500N: Color Multifunction digital document system; 800 MHz multi-tasking controller, 40 GB HDD with document filing, PCL5c/PCL6 compatible network printing/scanning, 100-sheet RSPF, auto duplex, two 500-sheet paper drawers and 100-sheet bypass. MX-3501N/MX-4501N: Color Multifunction digital document system; 800 MHz multi-tasking controller, 80 GB HDD with document filing, PCL5c/PCL6 compatible network printing/scanning, 150-sheet DSPF, Scan ² technology, auto duplex, two 500-sheet paper drawers and 100-sheet bypass. |
| Functions | Copy, print, network print, network scan, document filing, Sharpdesk plus a fax option ¹ |
| Copy System | Laser, Dry Transfer, Organic Photo Conductor Ultra-Fine Toners/Developers, Magnetic & Heat Process |
| Copy Size | Input: Min. 5 1/2" x 8 1/2", Max. 11" x 17" Output: Envelopes, Letter, Letter-R, Legal, Ledger & 12" x 18" |
| Copy Speed | MX-3500N/MX3501N: 35 ppm B&W/35 ppm Color MX-4501N: 45 ppm B&W/35 ppm color (Based on letter size original using copy tray 1) |
| First Copy Time | Platen glass: 4.1 seconds MX-4501N (B&W); 4.7 seconds MX-3500N/MX-3501N (B&W); 6.9 seconds (color); DSPF: 7.3 seconds (B&W); 13.1 seconds (color); RSPF: 8.8 seconds (B&W); 13.9 seconds (color); Based on letter size original using copy tray 1 with laser unit motor running. |
| Warm Up Time | 240 Seconds or less |
| Copy Data | 25% to 400% Zoom (1% increments), 25% to 200% (DSPF/RSPF); 9 R/E presets; 999 Continuous Copy |
| Scanning | MX-3500N: Up to 48 pages per minute scanning/fax/internet fax or 45 ppm copying using B&W originals; copying or scanning with color originals at standard resolution is 35 pages/minute. MX-3501N/MX-4501N: Up to 60 pages/minute with 2-sided B/W originals at standard resolution (includes Fax & Internet-Fax) Up to 35 pages/minute with Color Copy or Scan originals at standard resolution |
| Original Feeder | MX-3500N: Reversing Single Pass; 100-sheet capacity (using 20 lb Bond) MX-3501N/MX-4501N: Duplex Single Pass; 150-sheet capacity (using 20 lb. bond) Sizes: 5 1/2" x 8 1/2", 8 1/2" x 11", 8 1/2" x 11" R, 8 1/2" x 14", 11" x 17" (13-34 lb. bond) |
| Paper Feed | Standard: Two 500-sheet paper drawers (letter, legal, ledger, statement size) Optional: One 500-sheet paper drawer (letter, legal, ledger, statement size) or two 500-sheet paper drawers (letter, legal, ledger, statement size) and 3,500-sheet large capacity tray (letter size). See authorized dealer for configurations. |
| Paper Types | Paper drawers and large capacity tray: 16-28 lb. bond paper. Other paper types include plain, pre-printed, recycled, pre-punched, letterhead and color paper. |
| Bypass Tray | Capacity: 100 sheets (letter, legal, ledger, statement, 12"x18" & envelope size) Categories: Plain paper (16-28 lb. bond 60-105 gsm), Heavy paper (28-56 lb. bond/90-110 Index/106-209 gsm), Envelope (20-24 lb. bond/Monarch/Com-10), Tab paper (letter only). Other types include label stock, gloss paper, pre-printed, recycled, pre-punched, letterhead, color, and OHP film. |
| Output Tray | Main output tray (top) 500 sheets (face down); Option: Right-side tray 100 sheets (face down) |
| Duplexing | Standard automatic duplex copying and printing of up to 110 Index |
| Interface | Ethernet (10/100BaseT), USB 2.0 (host port), USB 2.0 (device port) |
| Memory | Standard 768 MB (copier memory); 640 MB (printer/network scanning) memory |
| Hard Disk | MX-3500N (40 GB HDD): Document Filing: 10 GB • Main/Custom: Up to 1,400 pages or 1,000 files • Quick Folders: Up to 1,400 or 1,000 files MX-3501N/MX-4501N (80 GB HDD): Document Filing: 30 GB • Main/Custom: Up to 4,200 pages or 1,000 files • Quick Folders: Up to 1,400 or 1,000 files |
| Resolution | Scan: monochrome/color: Max 600 DPI; Copy Output (B&W/Color): Max 600 DPI |
| Halftone | Equivalent to 256 gradations/2 levels (mono) |
| Color modes | Auto Color Selection, Full Color, B/W, Dual & Single Color Modes |
| Copy Features | Scan-once Print-many (Electronic Sorting), Offset-stacking, Auto Color Selection (ACS), Auto Paper Selection (APS), Auto Magnification Selection (AMS), Auto Tray Switching, Rotation Copy, Job Reservation, Tandem Copy, Book Copy, Margin Shift, Tab-paper Insertion, Edge Erase, Center Erase, Dual-page Copy, Cover Pages, Insert Pages, OHP Insertion, Job Build, Card Shot, Mirror Image, B/W Reversal, Centering, Proof Copy, 2-in-1, 4-in-1, Pamphlet, Photo Repeat, Multi-page Enlargement, Document Filing, Account Management, Job Programs, Stamp Mode (Date/Text/Page B&W/Color) ¹ |

Main Specifications Continued

| | |
|---------------------|---|
| Accounts | Up to 1,000 users: Supports user-number authentication (on device), login name/password (on device) or login name/password (on device via LDAP) |
| Firmware | Flash ROM update via USB and/or network |
| Power Source | AC 100-127 VAC, 60 HZ, 12 Amps |
| Power | Approx Max: 1440W; Sleep Mode: 13W Low Power Mode: 185W (MX-3500N/MX-3501N) 223W (MX-4501N) |
| Weight | MX-3500N: Approximately 262 lbs. (base unit) MX-3501N/MX-4501N: Approximately 282 lbs. (base unit) |
| Dimensions | MX-3500N: 25 7/16" (w) x 26 3/8" (d), x 37 7/16" (h) MX-3501N/MX-4501N: 25 7/16" (w) x 26 3/8" (d), x 37 13/16" (h) |

Network Printing System (standard)

| | |
|--------------------------|--|
| PDL | PCL6 / PCL5c compatible |
| Resolution | 1,200 dpi (monochrome), 600 DPI, 300 DPI ² |
| Operating Systems | Windows [®] 98, Windows Me, Windows XP, Windows XP x64, Windows NT [®] 4 (SP5 or later), Windows 2000, Windows Server [®] 2003, Windows Vista [™] , Windows Vista x64, Unix [®] , Novell [®] NetWare [®] 3.x/4.x/5.x, MAC OS [®] 9.x, MAC [®] OS X |
| Software | Print drivers, Printer Status Monitor and Printer Administration Utility |
| Features | Continuous, Duplex, Pamphlet, N-up, Image Rotation, Different Cover Page/Last Page, Transparency Inserts, Tabs, Carbon-copy Print, Fit-to-page, Poster, Margin Shift, Mirror Image, Watermarks, Overlay, Confidential, Confidential Batch, Release from Hold, Proof, Bypass, Job Priority, Job Control, Tandem and Direct printing (Note: some features not available on certain print drivers) ¹ |
| Direct Printing | File Types: TIFF, JPEG, PCL, TXT, PDF, Encrypted PDF, and PS (PS Expansion Kit required) ² Methods: FTP, Web page, E-mail and USB memory |
| Interface | Ethernet; 10/100 BaseT; USB 2.0 |
| Print Drivers | Windows 98, Windows Me, Windows NT 4.0 (SP5 or later), Windows 2000, Windows XP, Windows XP x64, Windows Server 2003, Windows Vista, Windows Vista x64, MAC PPD (optional), MAC OS 9, MAC OS X |
| Protocols | TCP/IP for Windows and Unix environments including HTTPS and SSL IPX/SPX for Novell [®] and EtherTalk for Macintosh [®] environments |
| Print Protocols | LPR, IPP, PAP, Raw TCP (port 9100), FTP, Novell Pserver/Rprinter |
| Security | Secure Socket Layer, IP/MAC address filtering, protocol filtering, port management, user authentication and document administration |

Network Scanning System (standard)

| | |
|-----------------------------|---|
| Scan Output | Resolution: 600, 400, 300, 200 or 100 DPI |
| Image Formats | Monochrome: TIFF, PDF, Encrypted PDF Color / Grayscale: TIFF, JPG, PDF, Encrypted PDF Internet Fax: TIFF-FX, TIFF-F, TIFF-S |
| Compression | Mono: Uncompressed, G3 (MH), G4(MR/MMR) Color/Grayscale: JPEG (high, middle, low) Internet Fax: MH/MMR (option) |
| Destinations | E-mail, Desktop, FTP, Folder (SMB), USB memory, Internet fax (option), Super G3 fax (option) |
| One-Touch | Up to 999 destinations (combined with scan destinations) and up to 500 Groups |
| Programs | 48 total |
| Scanning Protocols | TCP/IP (includes SMTP, LDAP, FTP, SMB) |
| Security | E-mail server user authentication and user account control |
| Configuration Method | Web-based management; user/administrator level login security |
| Software | Sharpdesk desktop document management software (1 user license) |

B&W Super G3 Fax Kit (option)

| | |
|--------------------------|--|
| Transmission Data | Super G3, G3 (33.6 KBPS) with JBIG, MMR, MR or MH Compression by sheets fed simplex, duplex or off the glass; Max 400 DPI (ultra-fine) at approximately 2 seconds; JBIG ¹ |
| Auto Dialing | Up to 999 destinations (combined with scan destinations) and up to 500 Groups |
| Inbound Routing | Forwards received fax data to E-mail |
| Originals | Up to 31.5" (for transmission) |
| Programs | 48 (combined) |
| Memory | 8 MB (exclusive) |
| Features | Quick on-line transmission, direct transmission, F-Code transmission/reception, rotate transmission, anti-junk fax reception, automatically staple received faxes, secure fax release, out of paper memory reception, auto redial, 2-in-1 transmission, duplex reception transaction reports, activity reports and PC fax ¹ |

Inner Finisher (option)

| | |
|--------------------------------|--|
| Output Capacity | Face down, 500 sheets (letter or statement) or 250 sheets (12" x 18", ledger, or legal) |
| Stapling | Plain paper, (letter, legal, or ledger size) with staple in front (1), rear (1), or both |
| Max. Pages for Stapling | 50 sheets (letter size) or 30 sheets (legal, ledger or mixed same-width size) |
| Stapled Sets | 30 bundles or 500 sheets (letter or statement size) or 30 bundles or 250 sheets (legal or ledger size) |
| Hole Punching | Optional hole-punch unit (3-holes/2-holes) MX-PNX1B |

Saddle-Stitch Finisher (option)

| | |
|---------------------------------|---|
| Type | Console finisher with dual exit trays (mounts on left side of host machine) |
| Output Trays | Upper tray: Offset stack tray; Lower tray: Book tray for saddle-stitch |
| Output Capacity | 1,000 sheets (letter/statement size) or 500 sheets (legal, ledger or letter-R size) |
| Output Data for Stapling | Face down; 30 sheets (letter/statement) or 25 sheets (legal, ledger or mixed same-width) using Plain paper, letter/legal/ledger size or mixed with staple in front (1), rear (1), or both |
| Saddle-Stitch | Center stitch/center folding (2 staples) letter/ledger paper sizes |
| Max Sets | Up to 10 sets (6-10 sheets per set) Up to 20 sets (1-5 sheets per set) |
| Punching | Optional hole punch unit AR-PN1B (2 holes/3 holes) |

Large Capacity Tray (option)

| | |
|--------------------|---|
| Type | Large capacity paper feed desk |
| Paper Size | Letter size, 16-28 lb. Bond |
| Capacity | 3,500 sheets |
| Paper Types | Plain paper, pre-printed, recycled, letterhead, pre-punched and colored paper |

Optional Equipment List

| | |
|----------|---|
| MX-DEX3 | Stand/1 x 500 Paper Desk |
| MX-DEX4 | Stand/2 x 500 Paper Desk |
| MX-45ABD | Rolling Cabinet Base |
| MX-LCX1 | Large Capacity Tray (requires MX-DEX3 or MX-DEX4 or MX-45ABD) |
| MX-FNX1 | Inner Finisher |
| MX-FNX2P | Saddle-stitch Finisher/Paper Pass Unit |
| MX-PNX1B | Punch Unit (for Inner Finisher) |
| AR-PN1B | Punch Unit (for Saddle-stitch Finisher) |
| MX-TRX2 | Exit Tray Unit |
| MX-PKX1 | Postscript [®] 3 [™] Compatible Expansion Kit |
| MX-FWX1 | Internet Fax Kit |
| MX-FXK1 | Super G3 Fax Kit |
| AR-PF1 | Bar Code Font Kit |
| MX-AMX1 | Application Integration Module ¹ |
| MX-AMX2 | Application Communication Module ¹ |
| MX-AMX3 | External Accounting Module ¹ |
| MX-FRX2 | Data Security Kit (Common Criteria Version) |
| MX-FRX2U | Commercial Data Security Kit (Commercial Version) |
| MX-PEX2 | Fiery Print Controller (Adobe [®] PostScript 3 included) |

Supplies

| | |
|-----------|-------------------------------|
| MX-45NTBA | Black Toner Cartridge |
| MX-27NTCA | Cyan Toner Cartridge |
| MX-27NTMA | Magenta Toner Cartridge |
| MX-27NTYA | Yellow Toner Cartridge |
| MX-27NVBA | Black Developer |
| MX-27NVSA | Cyan/Magenta/Yellow Developer |
| MX-27NRSA | Drum |

¹ Some features require optional equipment

² 1,200 DPI requires optional PostScript compatible expansion kit

³ Actual transmission time will vary based on line conditions. Based on Sharp Standard Test Chart with approximately 700 characters, letter size in standard resolution



SHARP ELECTRONICS CORPORATION
 Sharp Plaza, Mahwah, NJ 07430-1163
 1-800-BE-SHARP • www.sharpusa.com

Design and Specifications subject to change without notice. Sharp, Sharp OSA, Sharpdesk, My Sharp and all related trademarks are trademarks or registered trademarks of Sharp Corporation and/or its affiliated companies. Windows, Windows NT, Windows Server and Windows Vista are trademarks or registered trademarks of Microsoft Corporation. All other trademarks are the property of their respective owners.