

PLUS

Conceive your next idea here!



Models
C-20S
C-20W

CaptureBoard™

New Features
Introducing the new line of PLUS C-20 CaptureBoards, with industry leading features for saving and sharing the notes from your meeting. Now print the captured image directly from an on-board printer.

 **Network Capable**

 **Smart Phone Functions**

Capture the projected image and your hand-written notes!

PROJECT • WRITE • CAPTURE

Product Designs
Financial Spreadsheets
Architectural Plans
Business Charts
Education Lessons
and more...

Notes
Corrections
Captions
Annotations
Additions
and more...

Save as a digital file.
Print in color.
Keep an exact record of the presentation.
Share with meeting attendees.
Distribute in an email.
and more...

CaptureBoard™

Ideal for meetings in which a projected image is discussed.

A better meeting experience.

The PLUS CaptureBoard allows your meetings to be more dynamic, creative and productive. Meeting attendees can contribute ideas and provide input by adding their comments to the "writable" screen of the board. Combine and save all of the notes and comments along with the original projected image to your computer. Exact copies of the meeting notes can be easily stored or distributed as printed copies or via email.

Project & Write

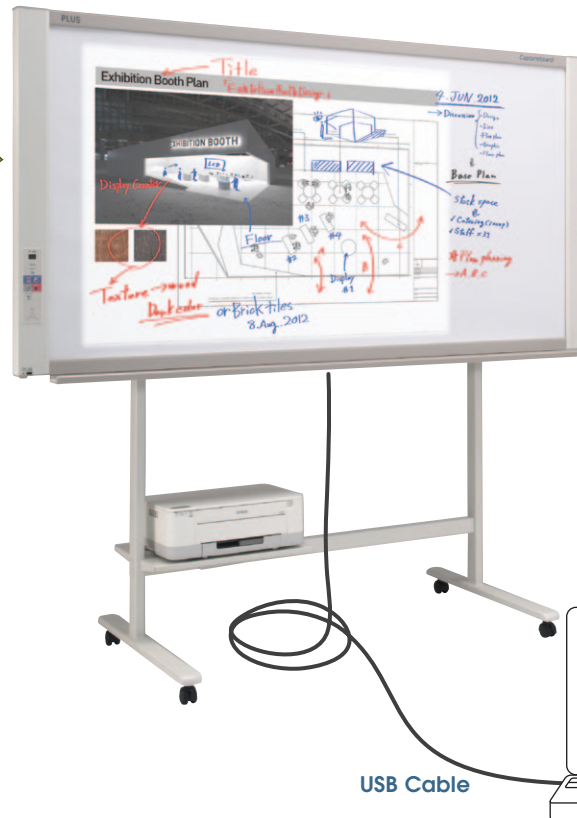
The CaptureBoard's unique screen surface possesses the properties of both a projection screen and a dry-erase board.

Project an image of up to 60 inches. Use the supplied color markers to write directly on both the projected image and in the blank spaces on the board.

The matte surface allows for sharp projected images with minimal reflection or glare.

Quick and Easy Set Up

1. Connect the board to the computer with a USB cable.
2. Connect the projector to the computer using an RGB cable.



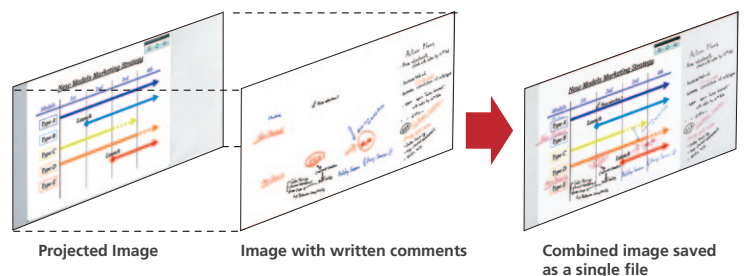
Capture & Save

The easy-to-use CaptureBoard software allows you to combine and save the projected image with the hand-written notes into a single digital file on your computer.

The simple four-button menu is intuitive and learning the software requires little training.

The combined image can be saved as a JPG, PNG or PDF file which can be easily printed in color, attached to an email or incorporated into office documents.

Software Overlay Method



Software Menu

- Scan Board
- Select Corner Mark Color
- Scroll Sheet
- Board Settings



Save as JPEG, PNG, or PDF

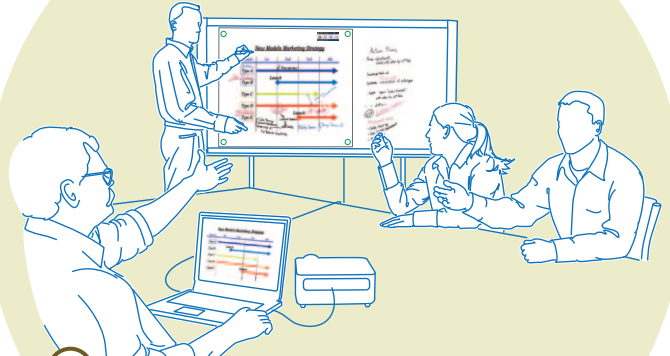
Usage.



1

Begin your meetings quickly.

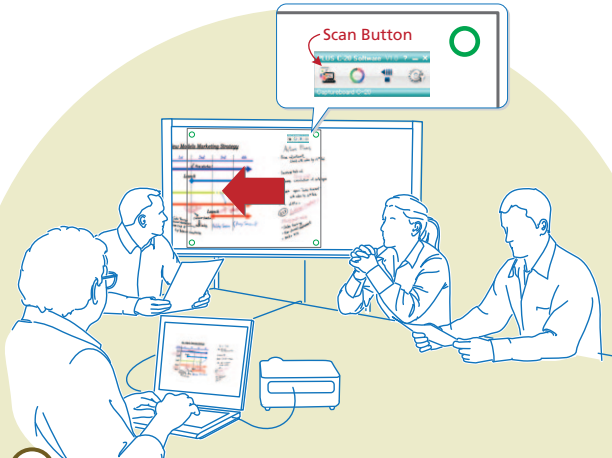
Start up the CaptureBoard software to bring up the main menu at the top right of the projected image. Four small circles appear in the corners of the image. Trace each circle with one of the supplied markers. The circles aid the software with proper alignment.



2

Have a lively and dynamic discussion.

Using the supplied markers, write anywhere on the screen, including over the projected image. Everyone can contribute, resulting in a lively and productive meeting.



3

Combine and save the image and notes.

To save your work press the Scan Button. The screen will scroll to the left to scan the written comments and then send them to your computer. On your PC, the CaptureBoard software overlays the written comments with the projected image. The file can then be saved and printed. You can be confident knowing that everyone possesses exact copies of the presentation.



4

Modify and share the saved information.

It is easy to distribute the meeting notes to co-workers since everything is saved as a digital image file. For example: Send revised design plans to the production department; insert the meeting notes into office documents; or, simply email the day's work to anyone who was absent from the meeting.

Copyboard Functionality

When not used with a projected image, the CaptureBoard can be used as a copyboard.

Push Button Operation for printing your notes to paper or saving your work digitally. Surpasses the functionality of a chalkboard or whiteboard.

USB Memory Stick Port

Push a button to save the hand-written notes to a USB memory stick without ever connecting to a computer. Note: Images projected on the screen cannot be saved using this method.

On-Board Printer (Optional)

A USB port and a printer tray allow for the connection of a color printer.* With a connected printer, print the hand-written notes directly from the board.

*See the Specifications and check with your dealer for current compatible printers.

Write
Print
Save



C-20 Control Panel

PLUS C-20 Series

Updated and slimmed down. The next generation of PLUS CaptureBoards.



Network Function

Connect to a network via an ethernet cable. There are two options for saving and sharing your information over the network.



- Save your copyboard data to the board's internal memory. Approximately 100 pages can be stored. Using an assigned IP address, your team can access the images on the board from their computers using a web browser. The data on the board is accessible even in "Stand-by" mode. Password protect the board for added security.
- When connected to the network, you can save to an FTP server so that everyone on your team has access to the saved information.

Access Via Your Smart Phone

Just install the Meeting Pocket App (MTGpocket) and gain access to many useful and time-saving meeting tools. Both Apple iOS® and Google Android™ mobile operating systems are supported, so you can use your iPhone®, iPad® or Android™ phone. The MTGpocket App lets you perform the "scan" function of the board from your Smart Phone. The resulting image file can then be previewed and saved to your phone's memory – as well as to the memory of phones belonging to anyone present in the meeting who has the MTGpocket App installed! Furthermore, the MTGpocket App lets you record audio and video during the meeting. The audio and video files are organized in the same folder as the board image files, so that all of the meeting data is in one convenient location. [Note: Using the MTGpocket App requires the connection of a "wireless access point" to the board as well as a compatible phone. Compatible with Apple iOS 4 and above and Android 2.3 and above.]



Faster Scanning Time

PLUS has once again improved scanning time. The C-20 boards (standard width model) scan in a mere 15 seconds – an improvement of 8 seconds over the previous model.

Copyboard Functionality

When used as a copyboard, there is no need to install software. Just connect your computer to the board via a USB cable whenever you want to save an image of your hand-written notes. Both PC and Mac compatible.

PDF, JPG and PNG Support

Users can easily save image files to USB memory or a PC in either PDF, JPG or PNG formats.

Magnet Attachable

Magnets can be attached to the board surface.

Improved writing surface

Easier to erase. No need for special markers. You can now use regular dry erase markers on the writing surface.

New, more convenient printing

Now, with the C-20, you can use the on-board printer (optional) to print the combined projected image and notes.



CaptureBoards shown with optional printers and stands.

Specifications

Model Name		C-20S	C-20W
Size	Installation Method	Wall Mount or Floor Stand*1	
	External Dimensions (Without Marker Tray)	W58.3 x D3.5 x H39.4 inches (W1480 x D89 x H1000 mm)	W78 x D3.5 x H39.4 inches (W1980 x D89 x H1000 mm)
	Weight	44 lbs (20 kg)	55 lbs (25 kg)
	External Dimensions With Floor Stand (max.)*1	W58.3 x D26.6 x H76.6** inches (W1480 x D675 x H1947** mm)	W78 x D26.6 x H76.6** inches (W1980 x D675 x H1947** mm)
	Floor Stand Weight	23 lbs (10.5 kg)	
Board	Panel Size	W51.2 x H35.8 inches (W1300mm x H910mm)	W70.9 x H35.8 inches (W1800mm x H910mm)
	Effective Reading Area	W50.4 x H35.4 inches (W1280mm x H900mm)	W70.1 x H35.4 inches (W1780mm x H900mm)
	Number of Panels	2	
	Grid	2 inch (50mm) Grid	
	Scrolling	Endless in one direction (Horizontal scrolling)	
	Drive Method	Motorized / Manual	
	Reading Method	CIS (Contact Image Sensor)	
	Reading Illumination Light Source	RGB LED	
	Reading Resolution	Main scanning direction (vertical sheet surface) 50 dpi (1.92 dots/mm) Sub scanning direction (horizontal sheet surface) 50 dpi (1.82 dots/mm)	
	Reading Time	Black & White: approx. 15 s Color: approx 15 s	Black & White: approx. 21 s Color: approx 21 s
Interface	USB Ports	3 Ports: Type B for PC and Type A for Printer and for USB Flash Memory	
	Saved File Format	PDF, PNG & JPG	
	Output Resolution	2458 x 1728 dots (fixed)	3418 x 1728 dots (fixed)
	Type	USB Flash Memory	
	External Memory	Compatible FAT types FAT 16, 32	
	Interface	USB 1.1 or USB 2.0**3	
	Network LAN Port	RJ-45 (10Base-T/100Base-TX)	
	Compatible Printers**4	InkJet Printers: HP PCL3e & PCL3GUI compatible (with some exceptions) Color Laser Printers: Konica Minolta magicolor 1600W and 1690MF	
	Printing Resolution	300 dpi or equivalent	
	No. Print Colors	16 or grayscale	
Add Functions	Clock	Used for the timestamp and for file dating properties (Includes backup battery for when there is a loss of power.)	
	PC Connection	Images can be acquired and device settings made via USB (using a browser)	
	Power Supply	AC Power Adapter Input: AC100-240V/50-60 Hz, Max 0.75 A Output: DC 12 V, 3.0 A	
Usage Conditions	PC Consumption	In standby: 3W, During operation: 12W (not including printer)	
	Temperature	10°C ~ 35°C	
Operating Environment	Humidity	30 ~ 85% (with no condensation)	
	OS	Microsoft® Windows 2000 Professional (Service Pack 4 or Later) / Windows XP (Home Edition/Professional Edition (Service Pack 2 or Later) / Vista (32 bit) / Windows 7 (32 bit / 64 bit) / Mac OS X® 10.5 or later	
	Web Browser	Windows: Internet Explorer® 6.0 or Later Macintosh: Safari® 4 or Later	
Accessories		Markers (Black, Red, Blue, Green), Eraser, AC Power Adaptor, USB Cable (9 ft Length), User's Manual, Assembly Set-up Manual, Printer Shelf, Wall Mounting Brackets.	
Optional Accessories		Rolling Floor Stand (Part #423-084)	

*1. Floor stand sold separately. The height is adjustable at 68.8, 72.7 and 76.6 inches (1747, 1847 and 1947 mm).

*2. The value indicated for "H" (height) is the maximum height.

*3. USB Memory device not included. The memory capacity corresponds to 32GB or Less.

*4. Printer sold separately. Check with your dealer for current available printer models.

*Please note that for quality improvement purposes, specifications and design are subject to change without prior notice.

Microsoft, Windows and Internet Explorer are either registered trademarks or trademarks of Microsoft Corporation in the United States and/or other countries. Macintosh, Mac, iPhone, iPad and Safari are trademarks of Apple Inc., registered in the U.S. and other countries. iOS is a trademark or registered trademark of Cisco in the U.S. and other countries and is used under license.

PLUS Corporation of America

9610 SW SUNSHINE CT.
SUITE 100
BEAVERTON, OR 97005
800-211-9001 • 503-748-8700
www.plus-america.com