

TECHNICAL NOTE

> CHAT 50 102

Using Chat 50 and a USB camera

Description

Chat 50 users may find the Chat 50 does not appear to pass playback audio when they have a USB camera plugged into their PC. This document discusses the procedure to use Chat 50 with a USB camera on a shared USB port.

Using Chat 50 and a USB camera

If you do not have playback audio (out of the Chat 50 speaker) after installing the Chat 50 software and drivers, check the following:

1. Check Windows Audio Properties:

Check Window's Sounds and Audio Device Properties. This can be done by right-clicking on the speaker icon located in the Windows System Tray- select "Adjust Audio Properties".

> Figure 1

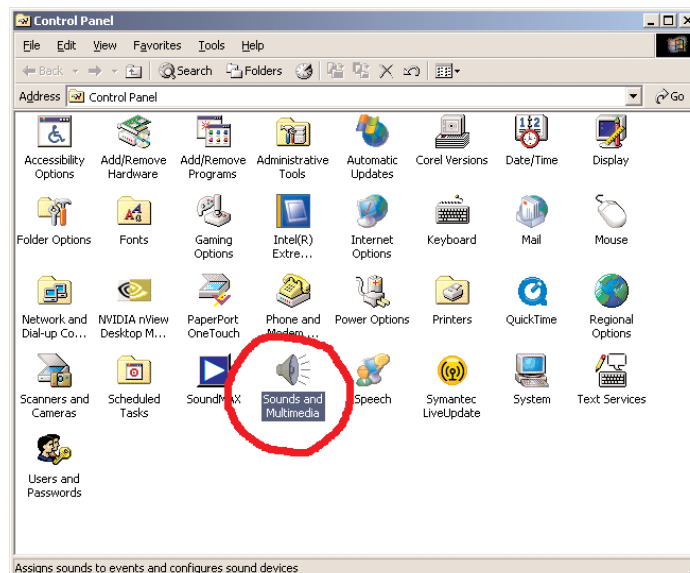
Windows System Tray:
Audio Properties



Or through the Windows Control Panel...

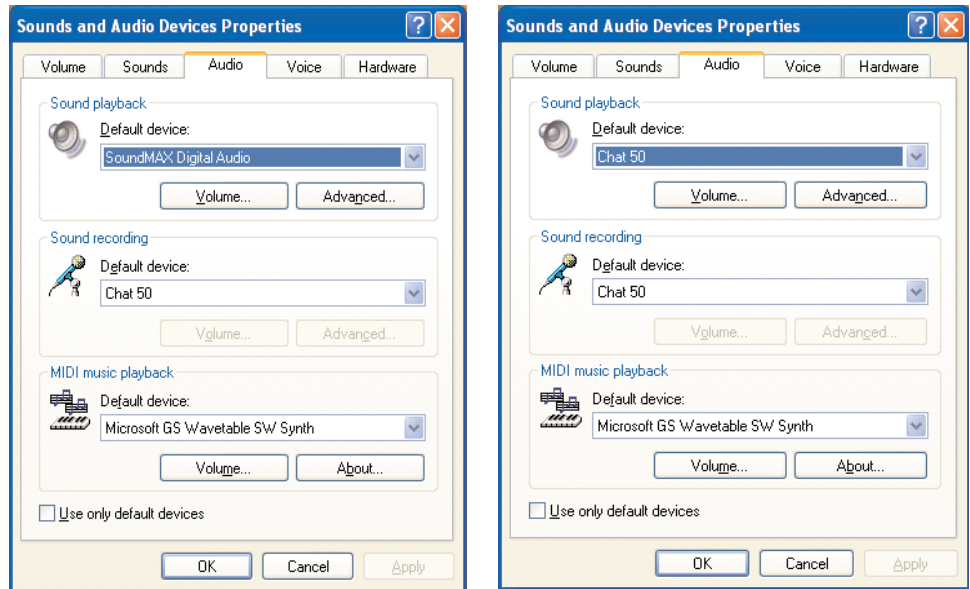
> Figure 2

Windows Control Panel:
Sounds and Multimedia



> Figure 3

Windows Audio Devices:
Select Chat 50 as Default Device



Once you open up the Audio properties settings, look at both the Playback and Recording device. If the Chat 50 is displayed as the default device, everything should be working normally. If not (left dialog), you will need to change from your sound card device to the Chat 50 (right dialog).

Click **OK** to save the Chat 50 as the default audio device for sound playback. If this does not correct the problem, check for other USB devices on any shared ports.

2. Check for other USB devices (like a camera) on a shared USB port:
Typically, Windows assigns drivers to the first USB device plugged into a USB port. This usually isn't a problem unless the USB port is daisy-chained, or shared with another port - via a single cable inside the PC case.

In this situation, these shared USB ports are tied to a single hardware driver in the PC. Therefore, devices like USB cameras that use audio drivers are automatically assigned by Windows as the default audio device for playback and recording- even though the camera doesn't have a speaker. When the Chat 50 is plugged in, Windows attempts to assign the drivers to the Chat 50. However, because the USB camera does not have a speaker, Windows fails to recognize it as the current default audio device, and is unable to assign the Chat 50 as the new default audio device.

To correct this, unplug the other USB device(s) and plug-in the Chat 50 *first*. After a few seconds, you can plug-in other USB device(s) on the shared port.

> ClearOne Worldwide

Salt Lake City, UT USA (Headquarters) 5225 Wiley Post Way Suite 500, Salt Lake City, UT 84116 • Tel: 801-975-7200 • 800-945-7730 • Fax: 801-977-0087 • **Tech Support:** 800-283-5936
 Latin America Tel: 801-975-7200 • Fax: 801-977-0087 • **Tech Support:** tech.support@clearone.com
 EMEA Tel: 44 (0) 1189 036 053 • **Tech Support:** tech.support@clearone.com
 APAC Tel: 801-303-3388 • **Tech Support:** tech.support@clearone.com